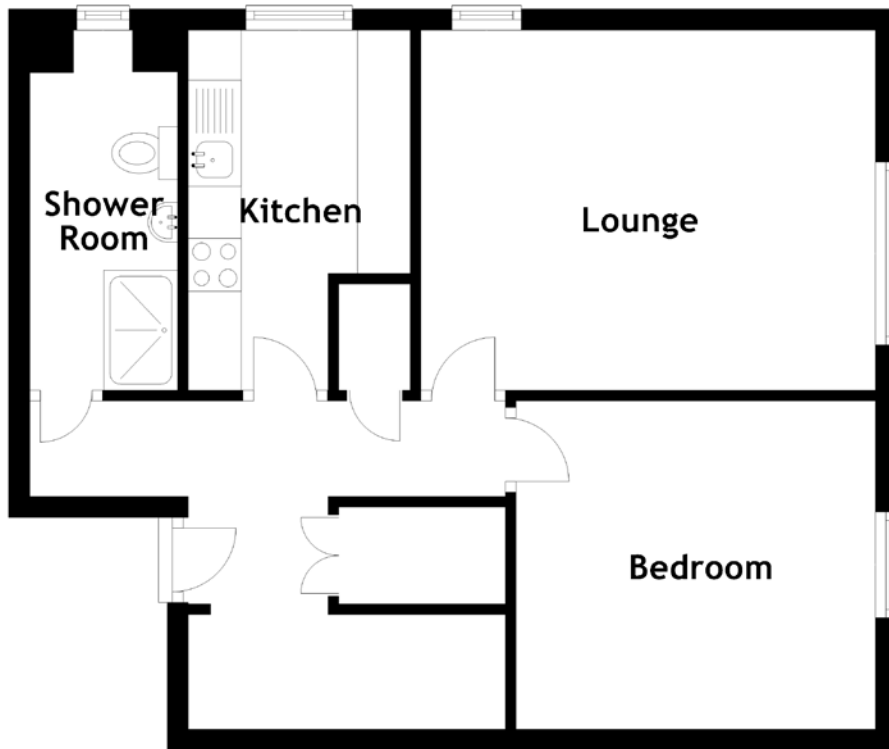


FLOOR PLAN, DIMENSIONS & MAP



Approximate Dimensions
(Taken from the widest point)

Lounge
Kitchen

4.30m (14'1") x 3.40m (11'2")
3.40m (11'2") x 2.10m (6'11")

Shower Room
Bedroom

2.80m (9'2") x 1.40m (4'7")
3.40m (11'2") x 3.10m (10'2")

Gross internal floor area (m²): 49m²
EPC Rating: D

