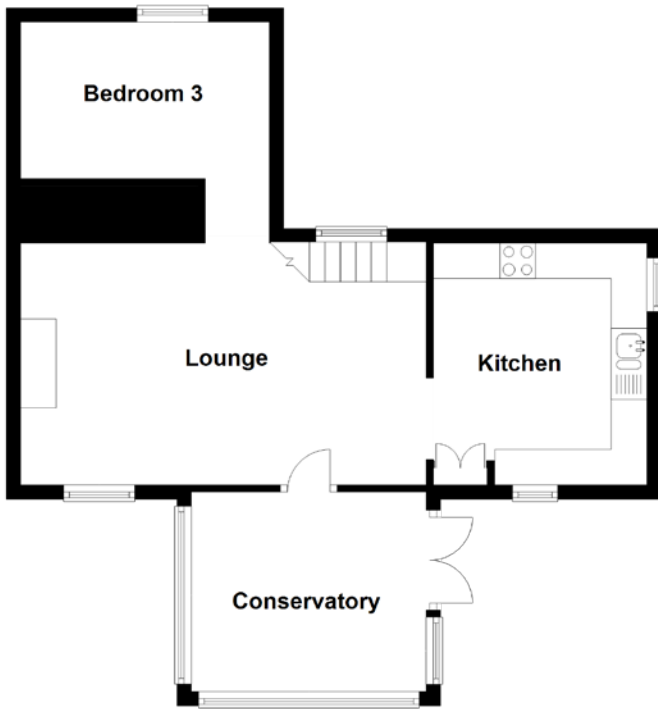


FLOOR PLAN, DIMENSIONS & MAP



Approximate Dimensions (Taken from the widest point)

Lounge	5.70m (18'8") x 3.40m (11'2")
Kitchen	3.40m (11'2") x 3.00m (9'10")
Conservatory	3.30m (10'10") x 2.80m (9'2")
Bedroom 1	3.40m (11'2") x 3.20m (10'6")

Bedroom 2	3.40m (11'2") x 3.30m (10'10")
Bedroom 3	3.50m (11'6") x 2.20m (7'3")
Shower Room	1.90m (6'3") x 1.60m (5'3")

Gross internal floor area (m²): 73m²
EPC Rating: E

