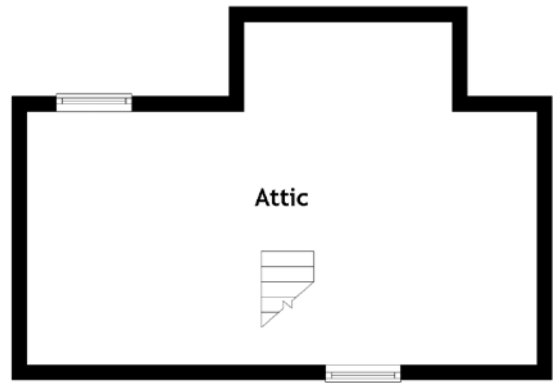
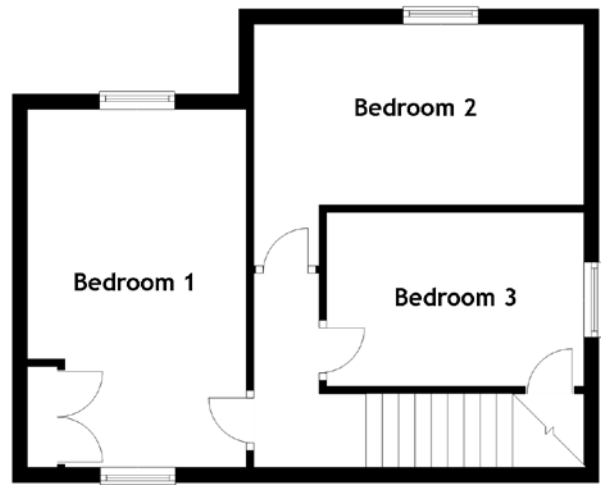
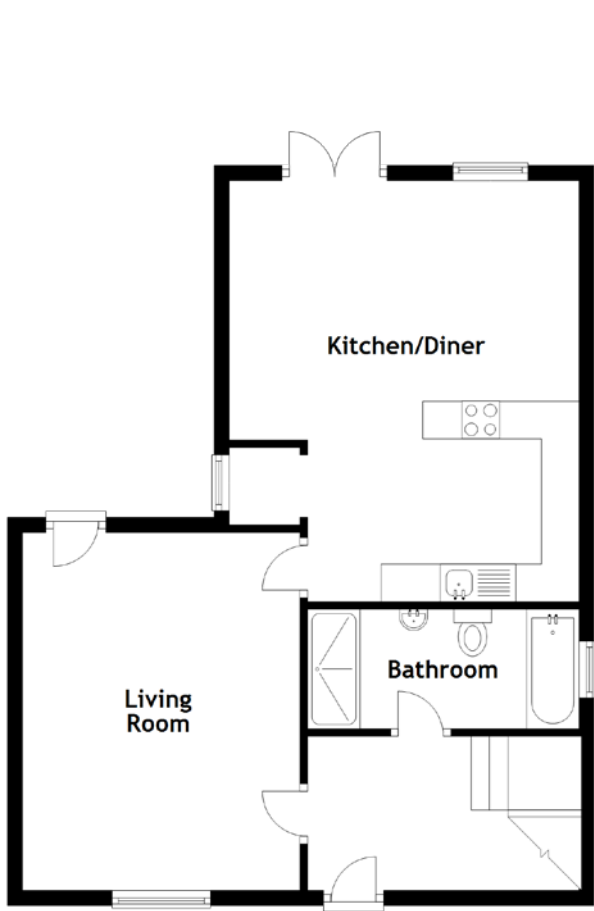


FLOOR PLAN, DIMENSIONS & MAP



Approximate Dimensions (Taken from the widest point)

| | |
|---------------|-------------------------------|
| Living Room | 4.76m (15'7") x 3.69m (12'1") |
| Kitchen/Diner | 5.60m (18'4") x 4.65m (15'3") |
| Bedroom 1 | 4.76m (15'7") x 2.91m (9'7") |
| Bedroom 2 | 4.46m (14'8") x 3.25m (10'8") |

| | |
|-----------|--------------------------------|
| Bedroom 3 | 3.42m (11'3") x 2.46m (8'1") |
| Bathroom | 3.61m (11'10") x 1.59m (5'3") |
| Attic | 6.78m (22'3") x 4.56m (14'11") |

Gross internal floor area (m²): 98m²
EPC Rating: C

