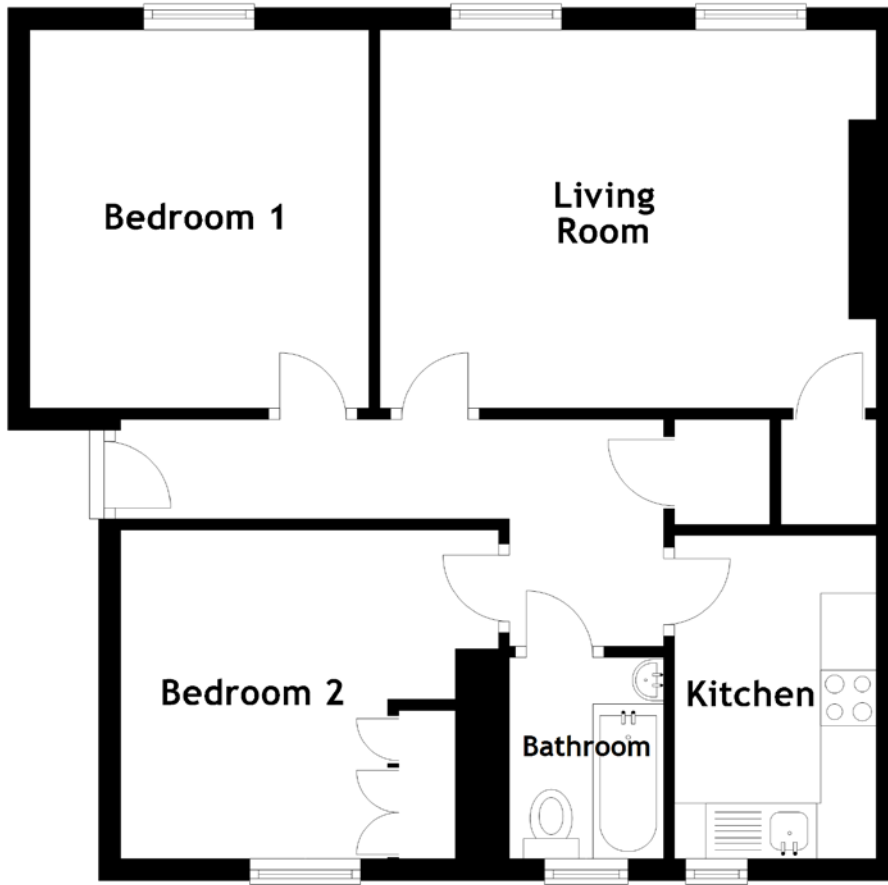


FLOOR PLAN, DIMENSIONS & MAP



Approximate Dimensions (Taken from the widest point)

Living Room 4.48m (14'8") x 3.42m (11'3")
 Kitchen 2.92m (9'7") x 1.82m (6')
 Bedroom 1 3.42m (11'3") x 3.06m (10')

Bedroom 2 3.41m (11'2") x 2.97m (9'9")
 Bathroom 1.82m (6') x 1.39m (4'7")

Gross internal floor area (m²): 52m²
 EPC Rating: C

