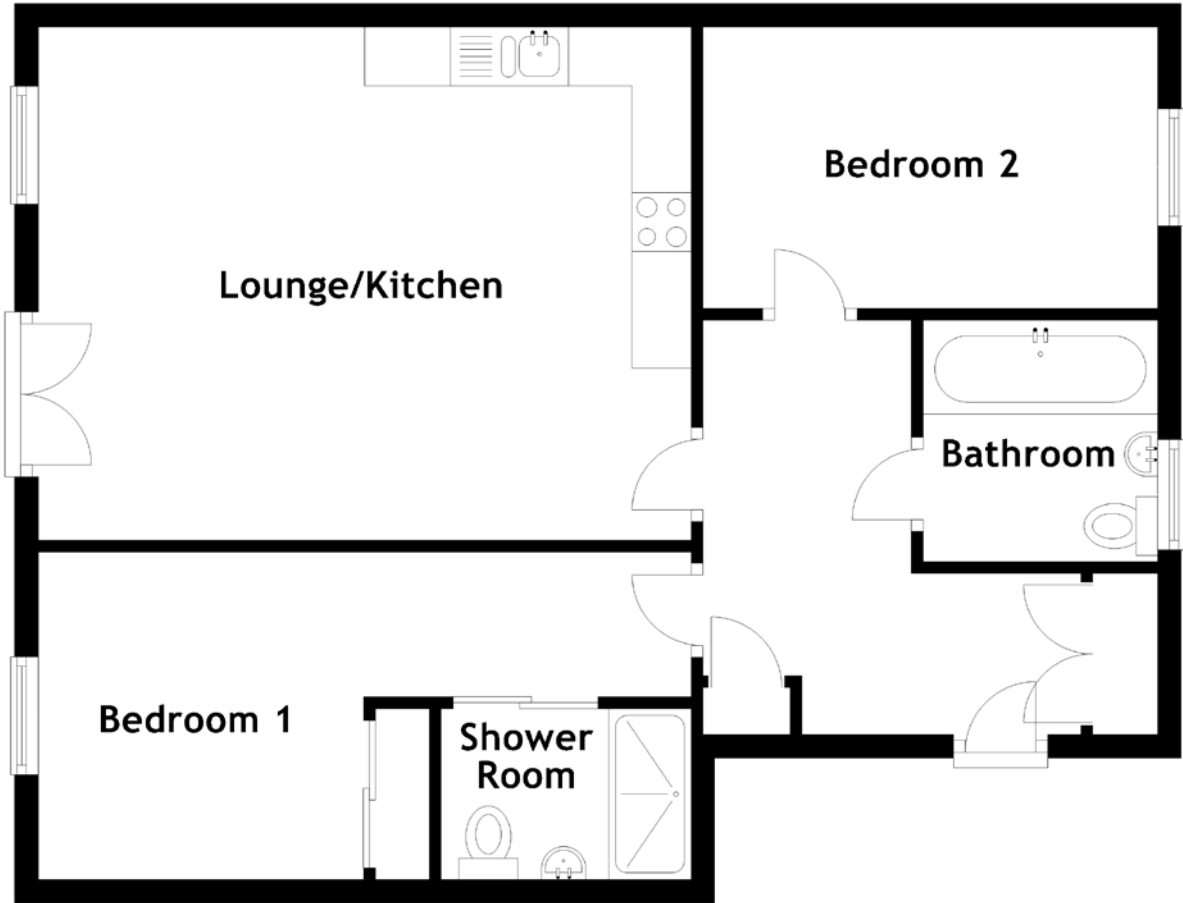


FLOOR PLAN, DIMENSIONS & MAP



Approximate Dimensions (Taken from the widest point)

Lounge/Kitchen 5.54m (18'2") x 4.36m (14'4")
 Bedroom 1 5.54m (18'2") x 1.23m (4')
 Bedroom 2 3.86m (12'8") x 2.39m (7'10")

Bathroom 2.05m (6'9") x 1.99m (6'6")
 Shower Room 2.12m (6'11") x 1.45m (4'9")

Gross internal floor area (m²): 67m²
 EPC Rating: B

