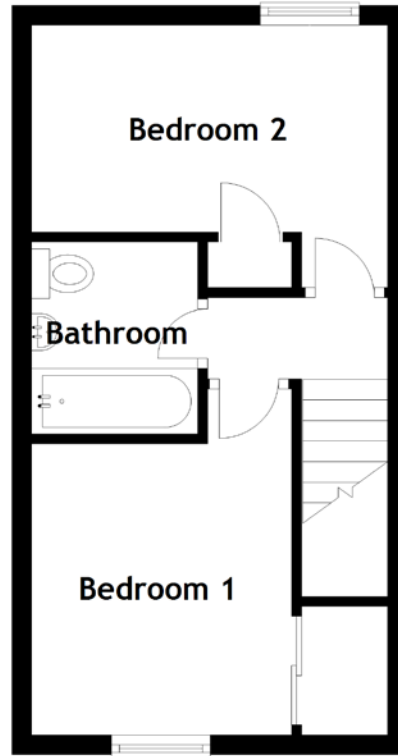
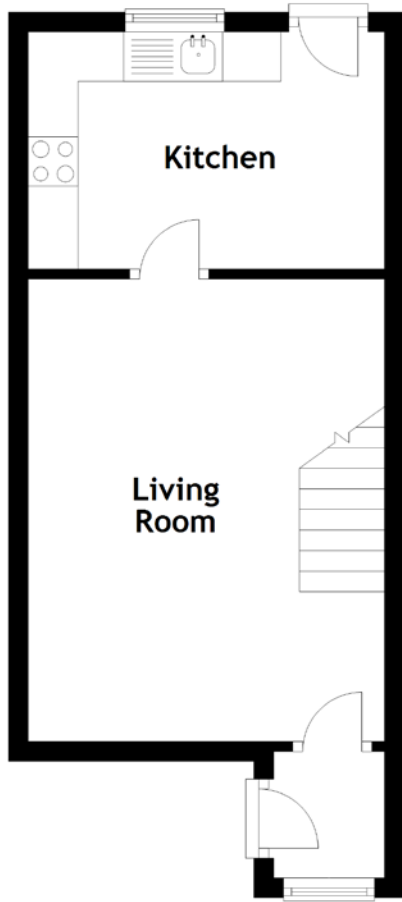


FLOOR PLAN, DIMENSIONS & MAP



Approximate Dimensions (Taken from the widest point)

Living Room	4.68m (15'4") x 3.60m (11'10")
Kitchen	3.60m (11'10") x 2.40m (7'10")
Bathroom	1.94m (6'4") x 1.68m (5'6")

Bedroom 1	3.60m (11'10") x 2.60m (8'6")
Bedroom 2	3.60m (11'10") x 2.65m (8'8")

Gross internal floor area (m²): 53m²
EPC Rating: E

