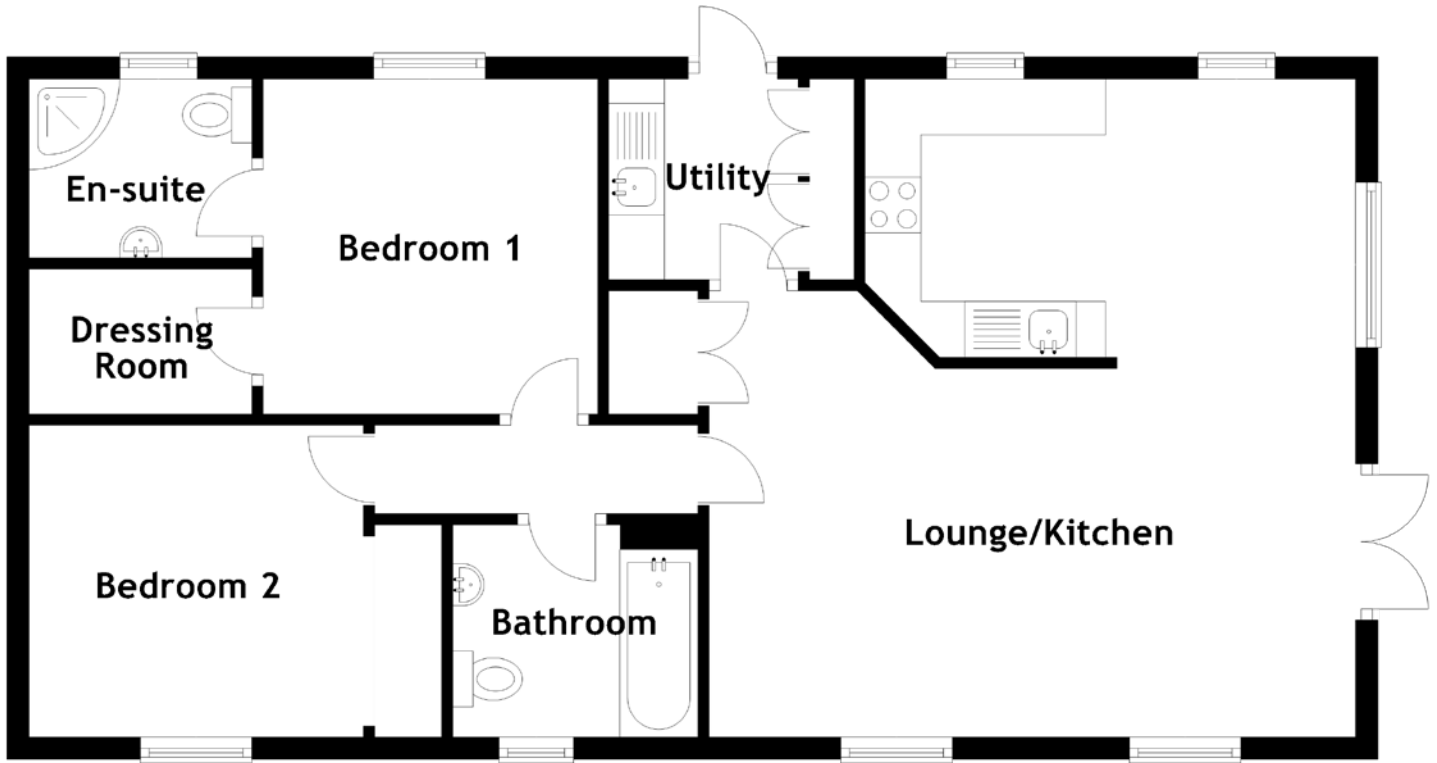


# FLOOR PLAN, DIMENSIONS & MAP



Approximate Dimensions  
(Taken from the widest point)

Lounge/Kitchen      5.90m (19'4") x 5.80m (19')  
Utility                1.80m (5'11") x 1.70m (5'7")

Bathroom            2.20m (7'3") x 1.90m (6'3")  
Bedroom 1            3.00m (9'10") x 2.80m (9'2")  
En-suite               2.00m (6'7") x 1.50m (4'11")  
Dressing Room      2.00m (6'7") x 1.30m (4'3")  
Bedroom 2            3.00m (9'10") x 2.80m (9'2")

