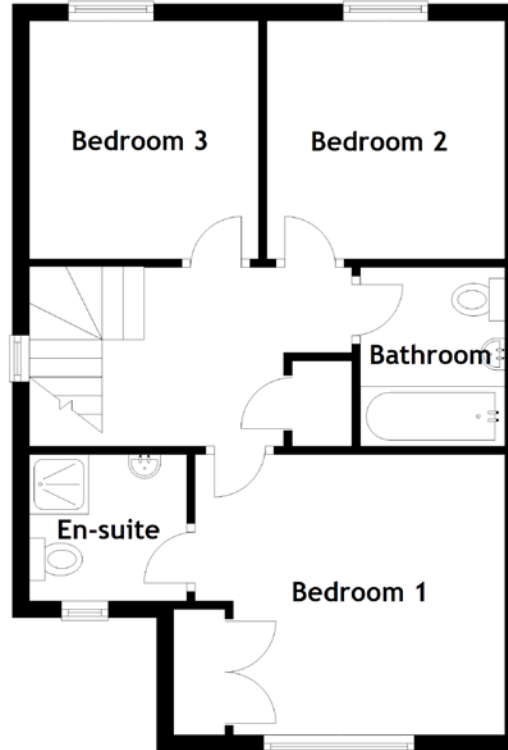
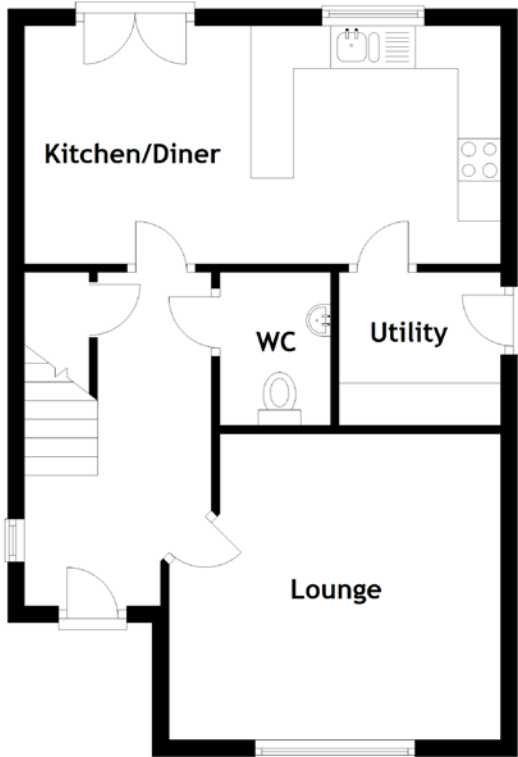


8 Edith McFee Place

WORMIT, NEWPORT-ON-TAY, DD6 8BF



Approximate Dimensions
(Taken from the widest point)

Kitchen/Diner	5.60m (18'4") x 2.80m (9'2")
Utility	1.90m (6'3") x 1.80m (5'11")
Lounge	3.90m (12'10") x 3.60m (11'10")
WC	1.80m (5'11") x 1.30m (4'3")
Bathroom	2.10m (6'11") x 1.70m (5'7")
Bedroom 1	3.70m (12'2") x 3.30m (10'10")
En-suite	1.80m (5'11") x 1.72m (5'8")
Bedroom 2	2.90m (9'6") x 2.80m (9'2")
Bedroom 3	2.90m (9'6") x 2.70m (8'10")

Gross internal floor area (m²): 88m²
EPC Rating: B