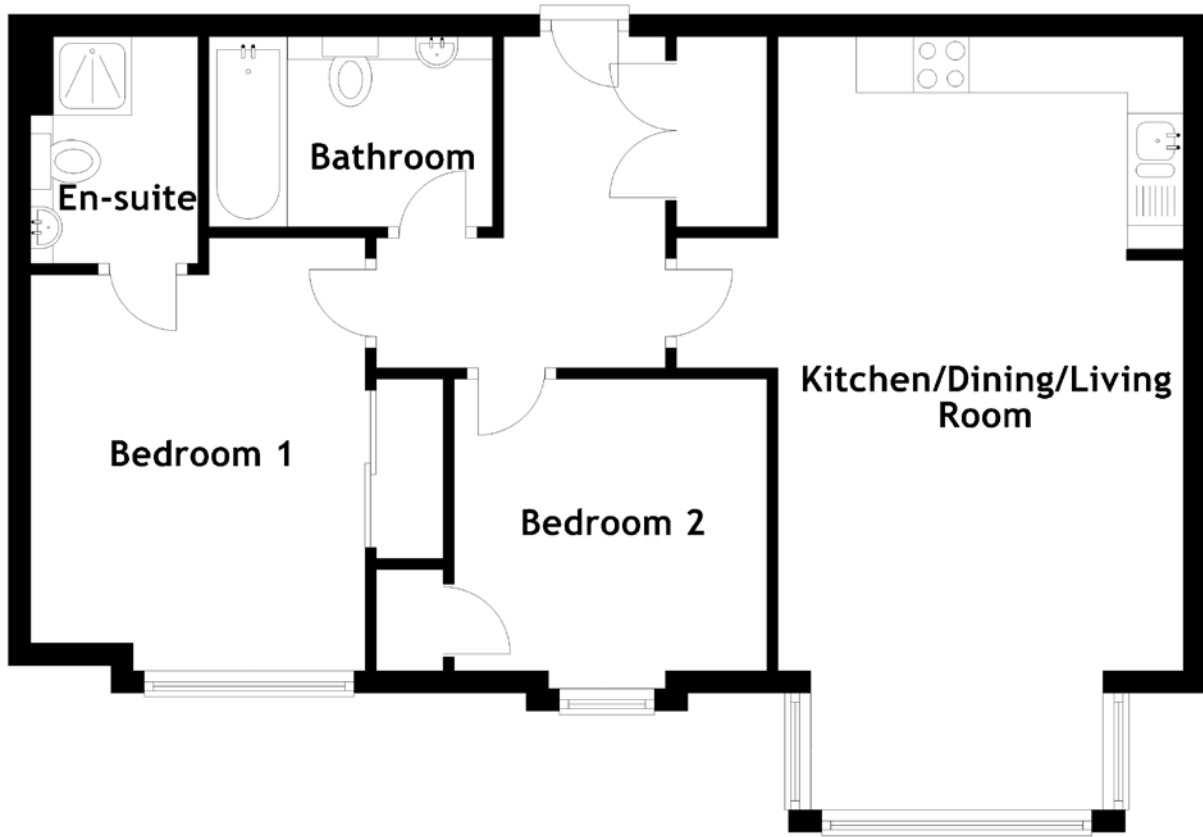


FLOOR PLAN, DIMENSIONS & MAP



Approximate Dimensions (Taken from the widest point)

Kitchen/Dining/Living Room 6.92m (22'8") x 4.54m (14'11")
 Bedroom 1 3.88m (12'9") x 3.00m (9'10")
 En-suite 2.03m (6'8") x 1.50m (4'11")

Bedroom 2 2.80m (9'2") x 2.61m (8'7")
 Bathroom 2.54m (8'4") x 1.70m (5'7")

Gross internal floor area (m²): 62m²
 EPC Rating: B

