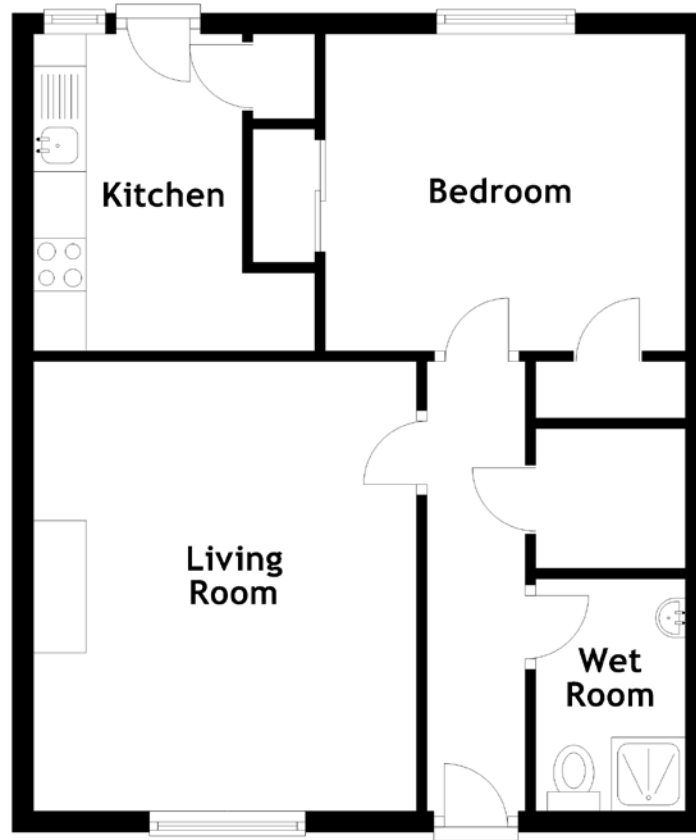


# FLOOR PLAN, DIMENSIONS & MAP



Approximate Dimensions  
(Taken from the widest point)

Living Room  
Kitchen

4.26m (14') x 3.63m (11'11")  
3.00m (9'10") x 1.98m (6'6")

Bedroom  
Wet Room

3.41m (11'2") x 3.00m (9'10")  
2.20m (7'3") x 1.42m (4'8")

Gross internal floor area (m<sup>2</sup>): 45m<sup>2</sup>  
EPC Rating: D

