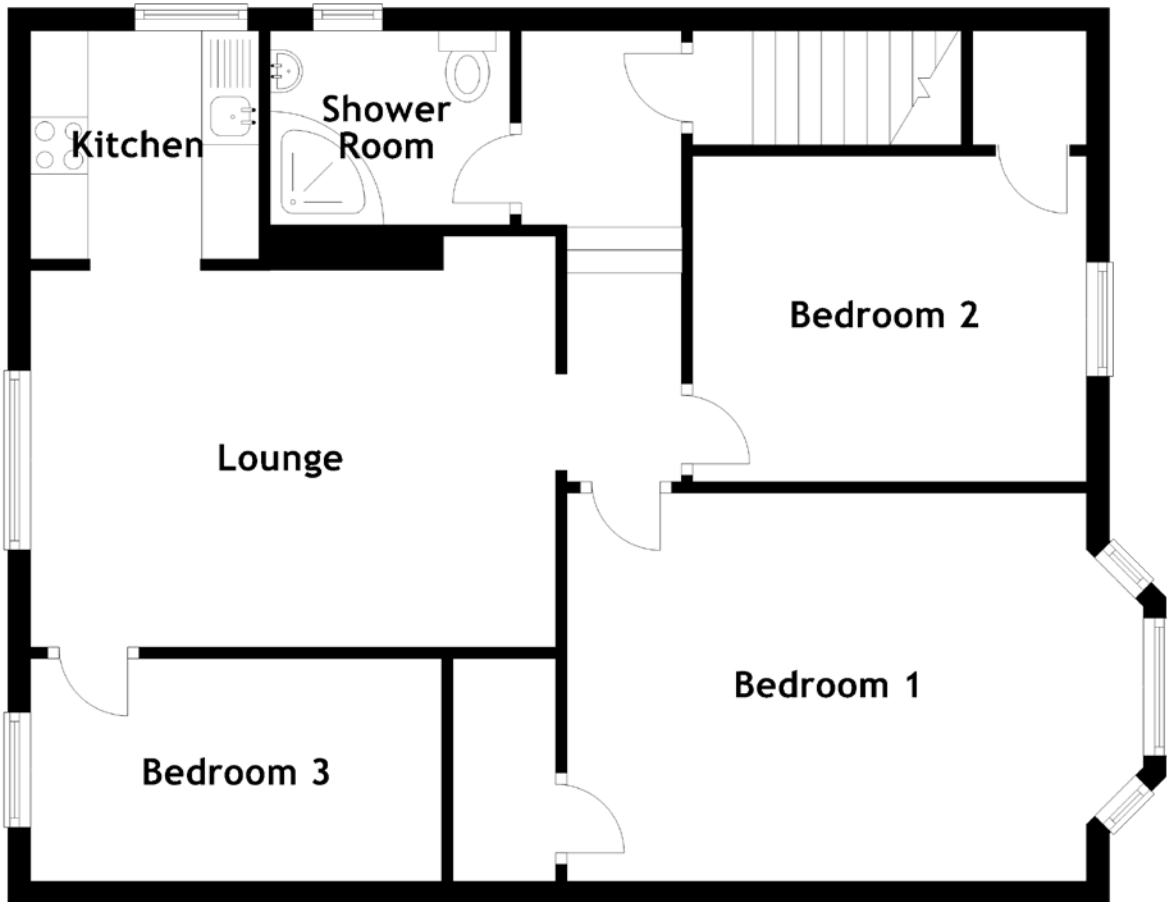


# FLOOR PLAN, DIMENSIONS & MAP



Approximate Dimensions  
(Taken from the widest point)

Lounge 4.60m (15'1") x 3.60m (11'10")  
 Kitchen 2.00m (6'7") x 2.00m (6'7")  
 Shower Room 2.10m (6'11") x 1.70m (5'7")

Bedroom 1 4.55m (14'11") x 3.40m (11'2")  
 Bedroom 2 3.35m (11') x 2.85m (9'4")  
 Bedroom 3 3.60m (11'10") x 1.95m (6'5")

Gross internal floor area (m<sup>2</sup>): 70m<sup>2</sup>  
 EPC Rating: C

