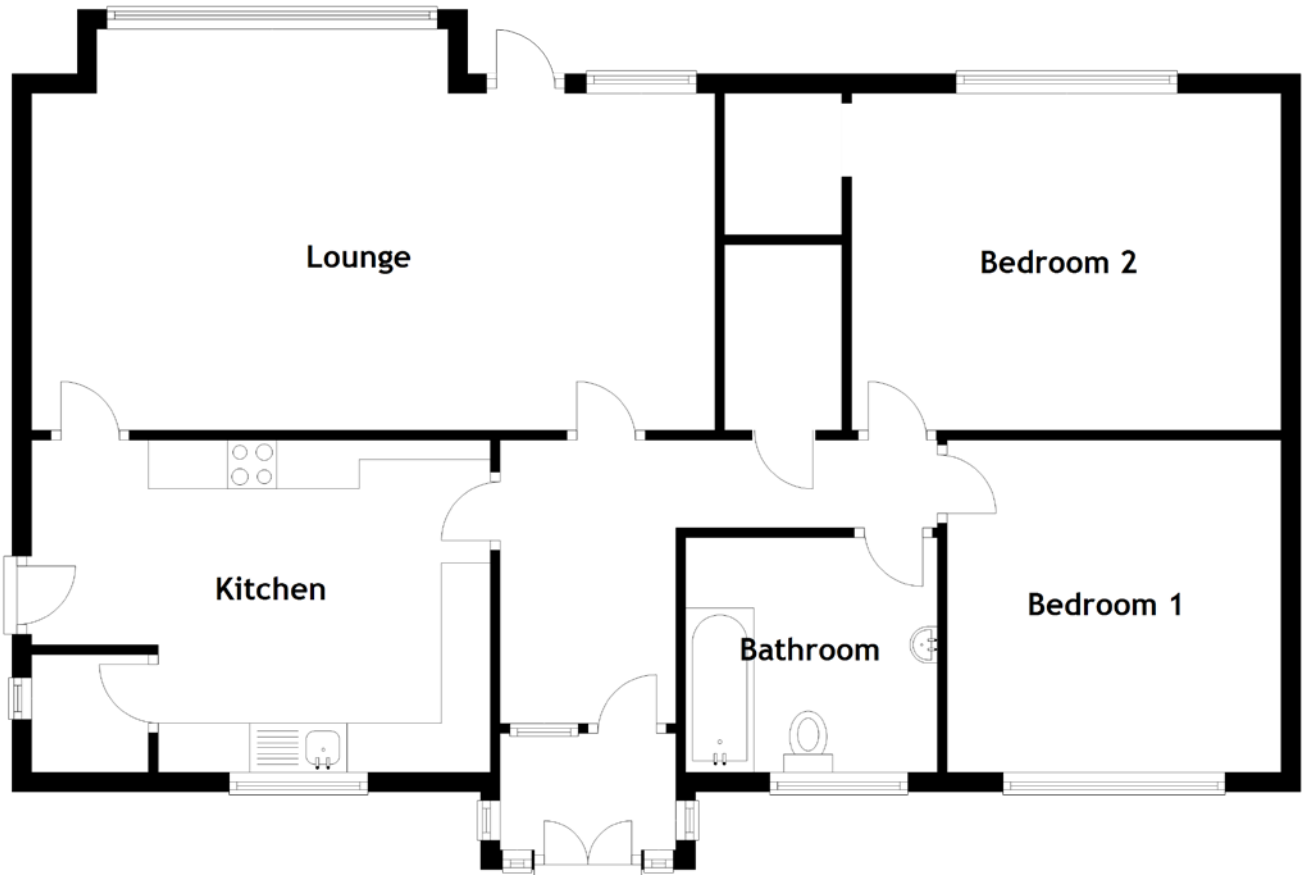


FLOOR PLAN, DIMENSIONS & MAP



Approximate Dimensions (Taken from the widest point)

Lounge	7.00m (23') x 3.45m (11'4")
Kitchen	4.70m (15'5") x 3.40m (11'2")
Bathroom	2.40m (7'11") x 2.40m (7'10")
Bedroom 1	3.45m (11'4") x 3.45m (11'4")

Bedroom 2

4.40m (14'5") x 3.45m (11'4")

Gross internal floor area (m²): 90m² | EPC Rating: F

Extras: Carpets and floor coverings, light fixtures and fittings, curtains and blinds.

