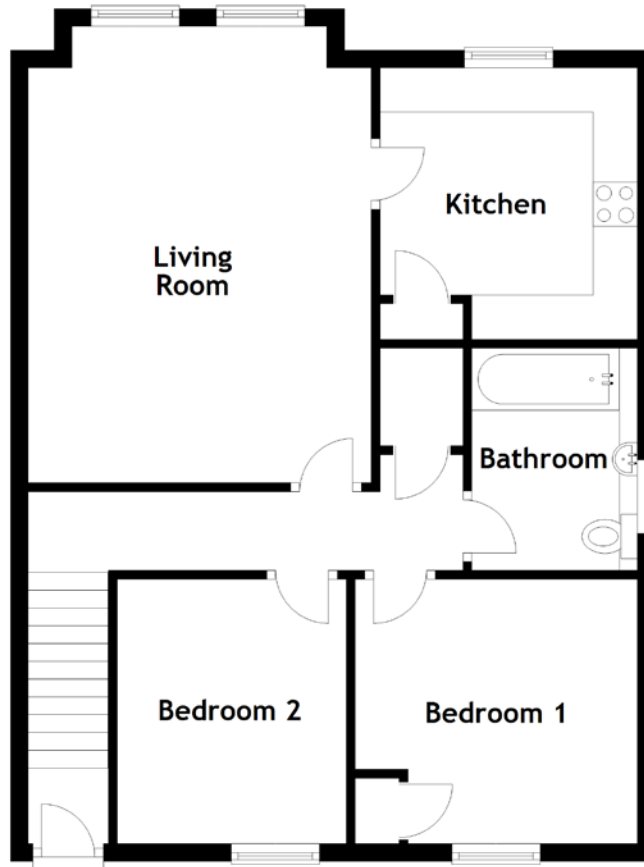


FLOOR PLAN, DIMENSIONS & MAP



Approximate Dimensions (Taken from the widest point)

Living Room 5.63m (18'6") x 3.88m (12'9")
 Kitchen 3.07m (10'1") x 2.91m (9'7")
 Bathroom 2.51m (8'3") x 1.87m (6'2")

Bedroom 1 3.19m (10'6") x 2.99m (9'10")
 Bedroom 2 2.99m (9'10") x 2.59m (8'6")

Gross internal floor area (m²): 62m²
 EPC Rating: C

