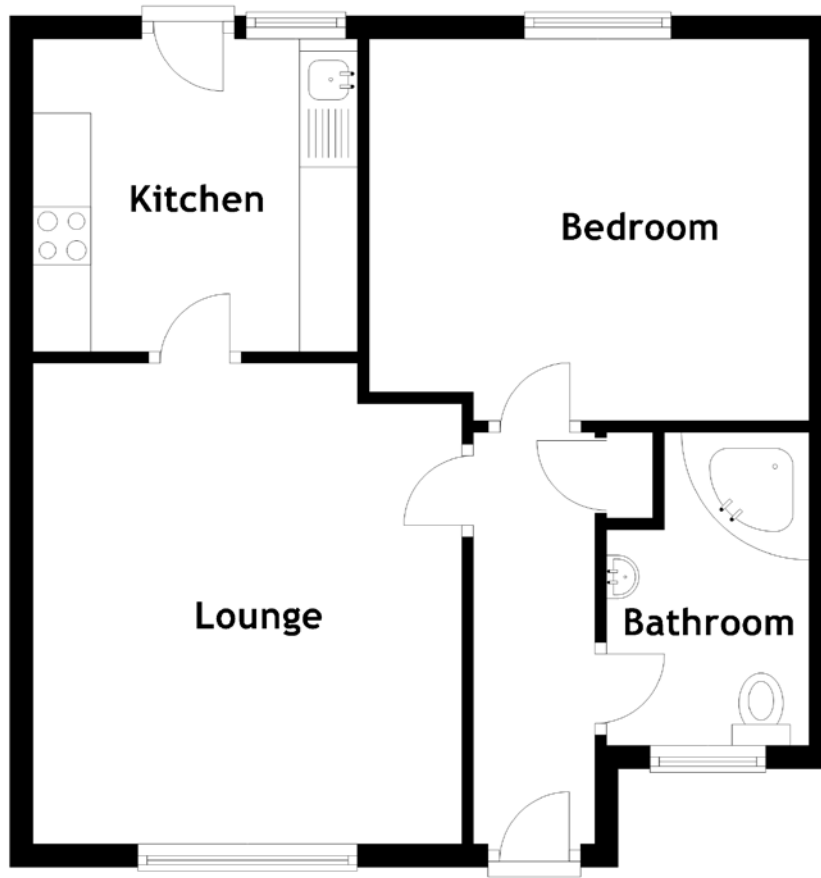


FLOOR PLAN, DIMENSIONS & MAP



Approximate Dimensions
(Taken from the widest point)

Lounge 4.15m (13'7") x 3.70m (12'2")
Kitchen 2.80m (9'2") x 2.70m (8'10")

Bedroom 3.50m (11'6") x 3.30m (10'10")
Bathroom 2.70m (8'10") x 1.75m (5'9")

Gross internal floor area (m²): 45m²
EPC Rating: D

