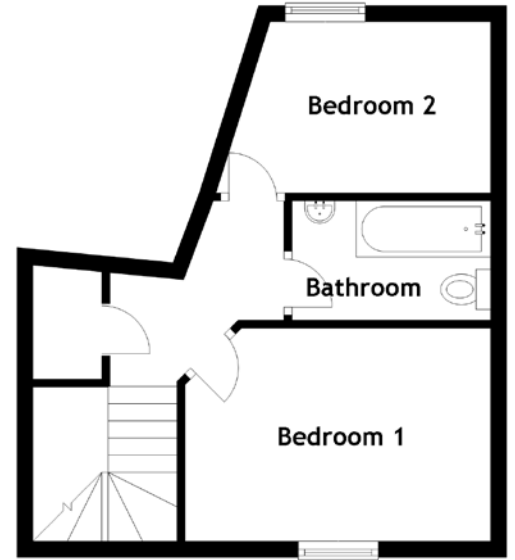
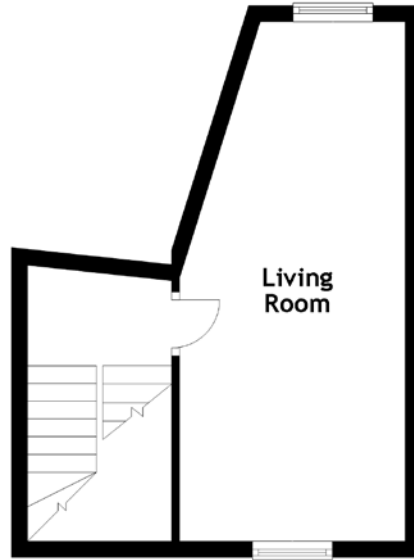
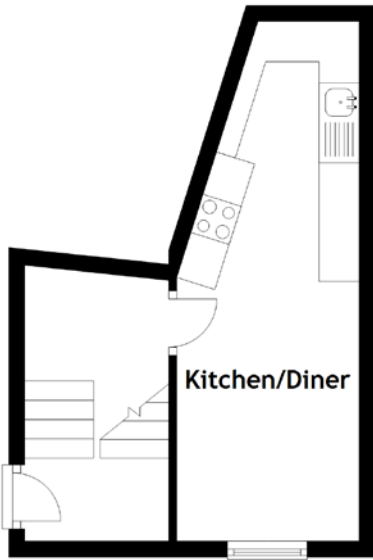


# FLOOR PLAN, DIMENSIONS & MAP



Approximate Dimensions (Taken from the widest point)

Kitchen/Diner 6.48m (21'3") x 2.28m (7'6")  
 Living Room 6.48m (21'3") x 2.82m (9'3")  
 Bathroom 2.64m (8'8") x 1.49m (4'11")

Bedroom 1 3.82m (12'6") x 2.66m (8'9")  
 Bedroom 2 3.45m (11'4") x 2.38m (7'10")

Gross internal floor area (m<sup>2</sup>): 95m<sup>2</sup>  
 EPC Rating: D

