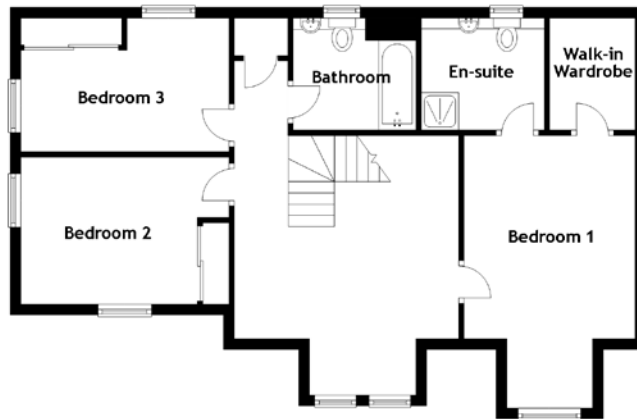
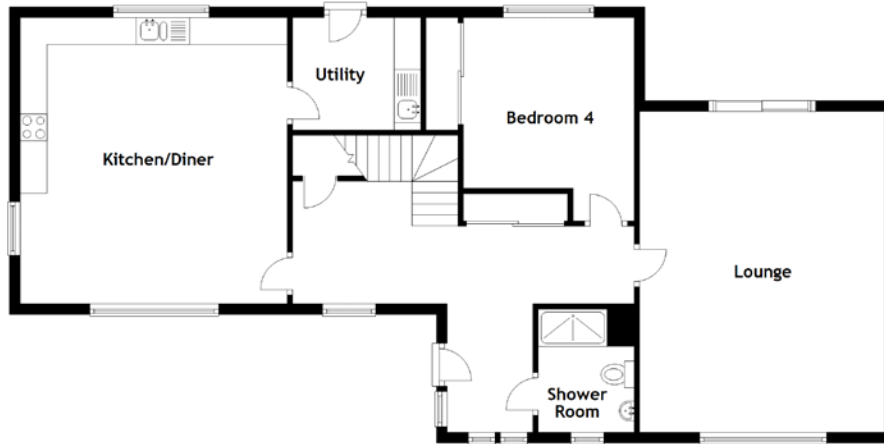


# FLOOR PLAN, DIMENSIONS & MAP



Approximate Dimensions (Taken from the widest point)

Lounge	6.00m (19'8") x 4.60m (15'1")
Kitchen/Diner	5.35m (17'7") x 5.00m (16'5")
Utility	2.40m (7'10") x 2.10m (6'11")
Bedroom 4	3.80m (12'6") x 3.20m (10'6")
Shower Room	2.30m (7'7") x 1.80m (5'11")
Bedroom 1	5.10m (16'9") x 3.20m (10'6")

En-suite	2.30m (7'7") x 2.30m (7'7")
Walk-in Wardrobe	2.30m (7'7") x 1.60m (5'3")
Bedroom 2	3.90m (12'9") x 2.75m (9')
Bedroom 3	3.90m (12'9") x 2.50m (8'2")
Bathroom	2.30m (7'7") x 2.30m (7'6")

Gross internal floor area (m<sup>2</sup>): 148m<sup>2</sup>  
EPC Rating: C

