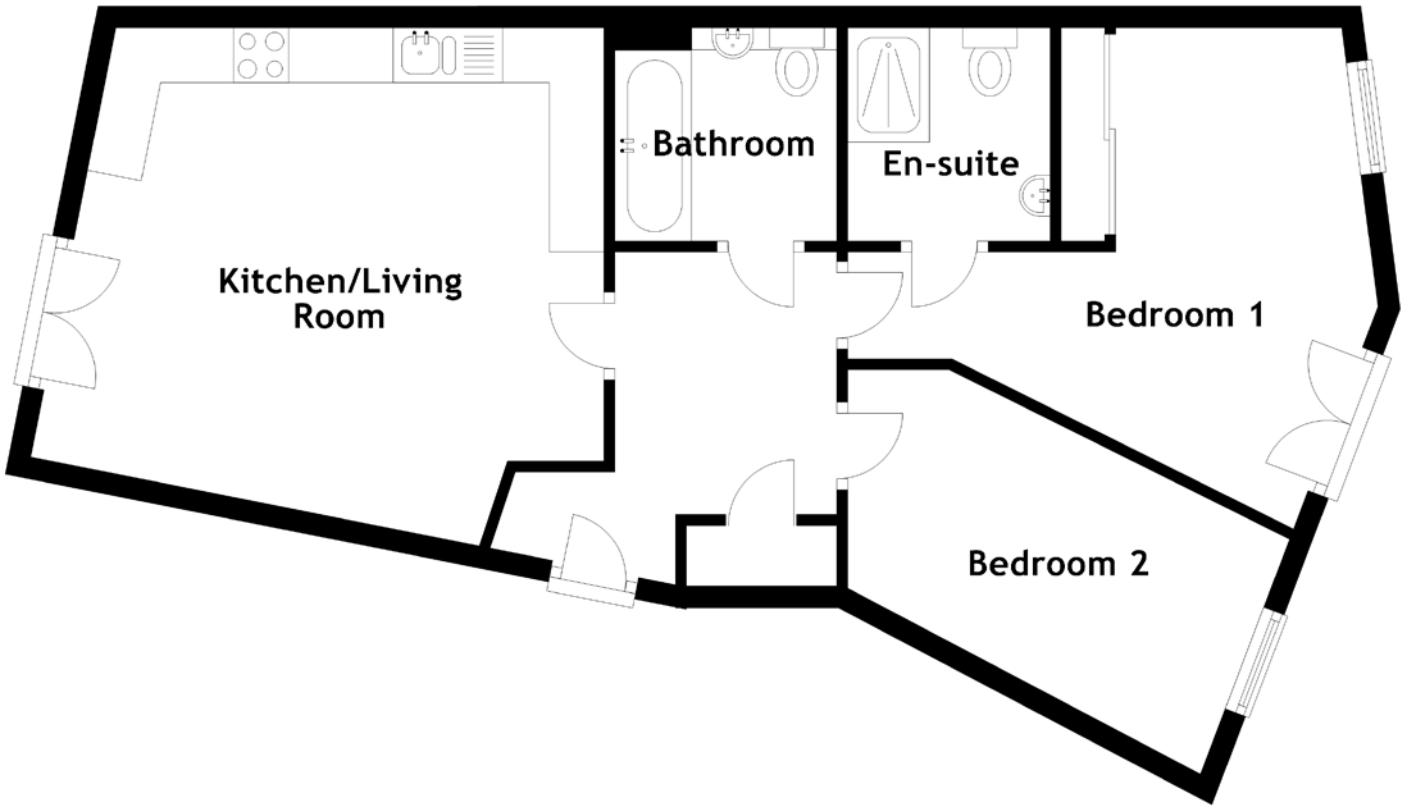


# FLOOR PLAN, DIMENSIONS & MAP



Approximate Dimensions (Taken from the widest point)

Kitchen/Living Room 5.01m (16'5") x 3.96m (13')  
 Bathroom 2.03m (6'8") x 1.95m (6'5")  
 Bedroom 1 4.96m (16'3") x 4.60m (15'1")

En-suite 1.95m (6'5") x 1.85m (6'1")  
 Bedroom 2 3.97m (13') x 2.30m (7'6")

Gross internal floor area (m<sup>2</sup>): 66m<sup>2</sup>  
 EPC Rating: B

