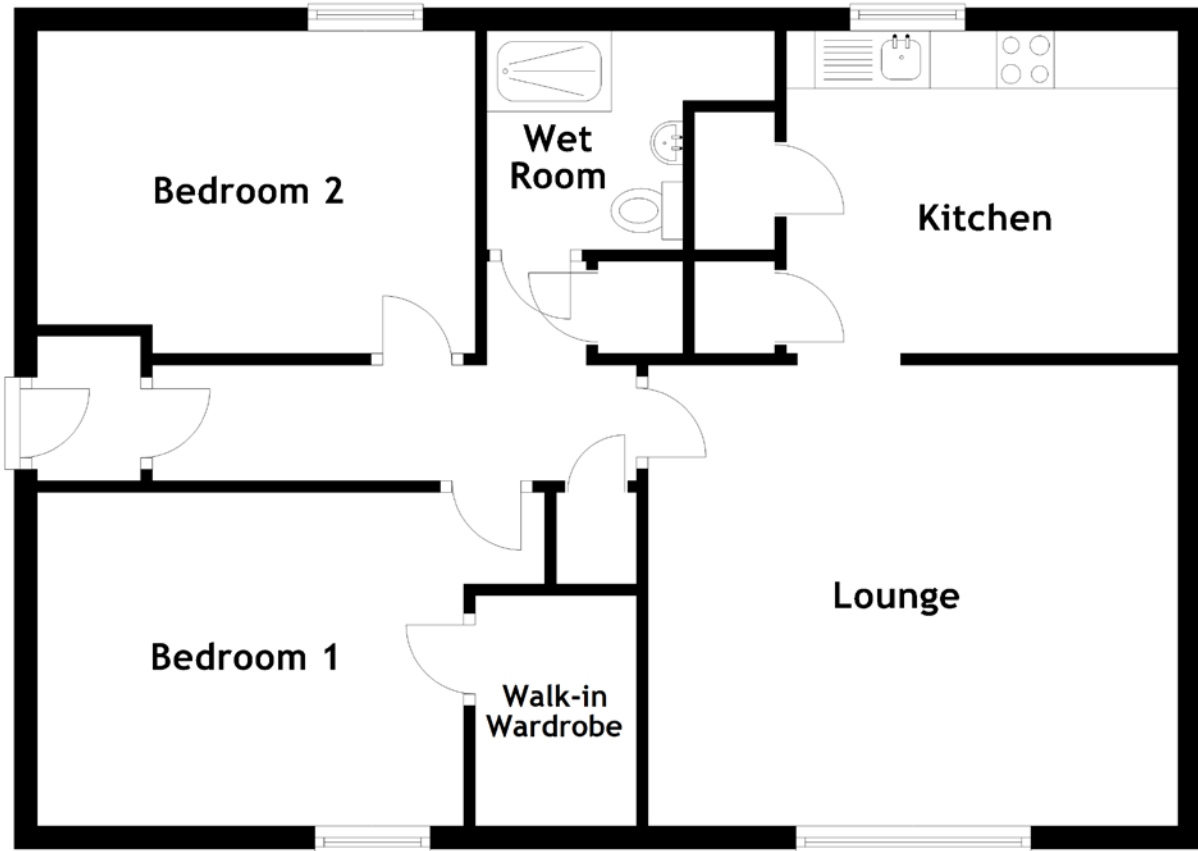


FLOOR PLAN, DIMENSIONS & MAP



Approximate Dimensions
(Taken from the widest point)

Lounge 4.60m (15'1") x 4.00m (13'1")
 Kitchen 3.40m (11'2") x 2.80m (9'2")
 Wet Room 2.50m (8'2") x 1.90m (6'3")

Bedroom 1 4.40m (14'5") x 2.90m (9'6")
 Walk-in Wardrobe 2.00m (6'7") x 1.40m (4'7")
 Bedroom 2 3.80m (12'6") x 2.80m (9'2")

Gross internal floor area (m²): 71m²
 EPC Rating: C

