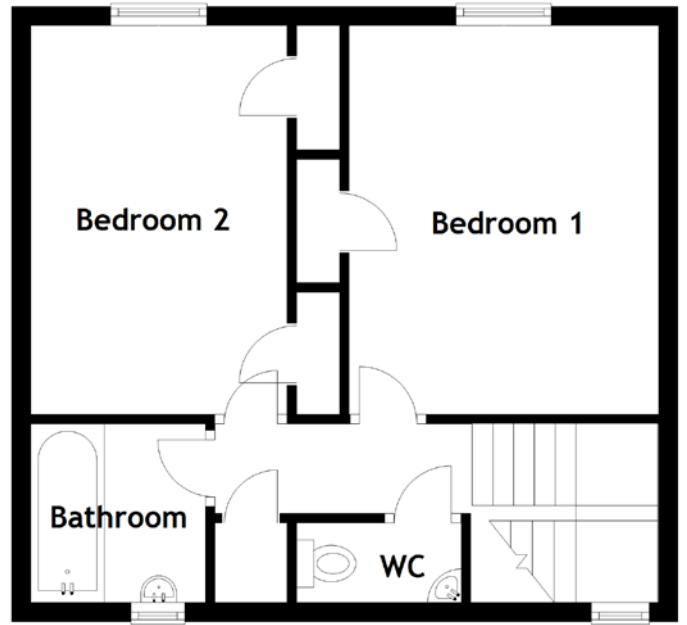
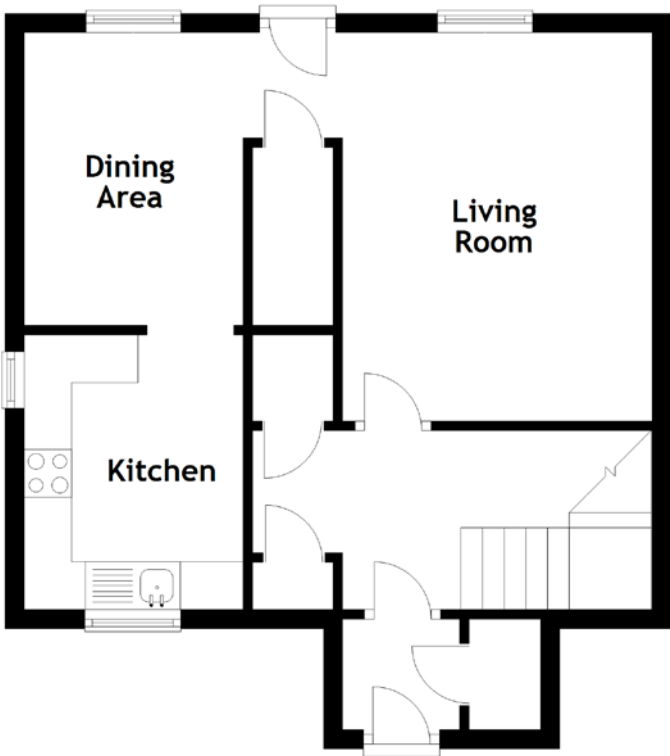


FLOOR PLAN, DIMENSIONS & MAP



Approximate Dimensions (Taken from the widest point)

Living Room 4.20m (13'9") x 4.07m (13'4")
 Dining Area 3.07m (10'1") x 2.30m (7'7")
 Kitchen 2.88m (9'5") x 2.30m (7'7")
 Bedroom 1 4.14m (13'7") x 3.25m (10'8")

Bedroom 2 4.14m (13'7") x 2.69m (8'10")
 Bathroom 1.83m (6') x 1.80m (5'11")
 WC 1.73m (5'8") x 0.83m (2'9")

Gross internal floor area (m²): 82m²
 EPC Rating: D

