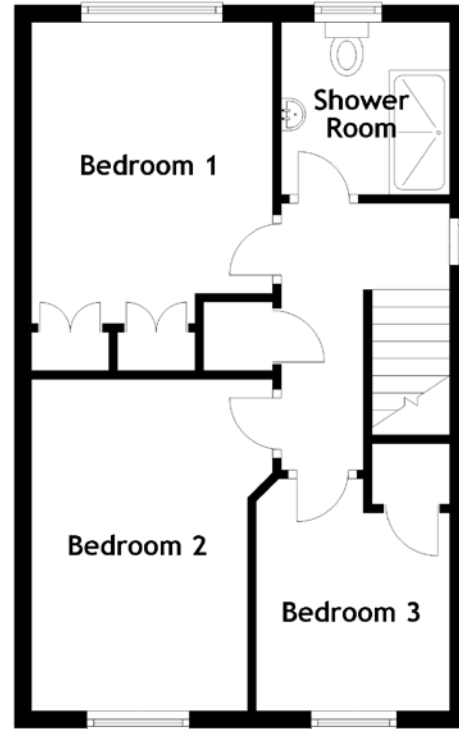
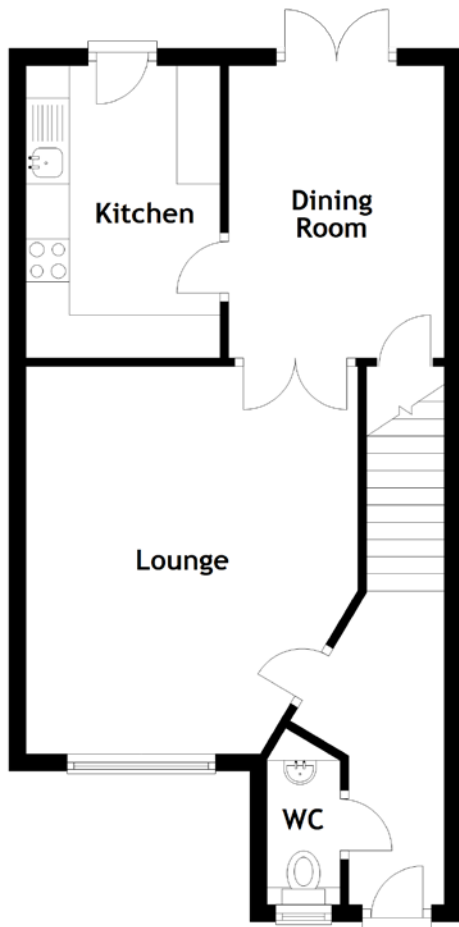


FLOOR PLAN, DIMENSIONS & MAP



Approximate Dimensions
(Taken from the widest point)

Lounge	4.50m (14'9") x 3.85m (12'8")
Dining Room	3.40m (11'2") x 2.50m (8'2")
Kitchen	3.40m (11'2") x 2.25m (7'5")
WC	1.65m (5'5") x 0.85m (2'9")

Shower Room	2.00m (6'7") x 1.95m (6'5")
Bedroom 1	3.50m (11'6") x 2.80m (9'2")
Bedroom 2	3.85m (12'8") x 2.80m (9'2")
Bedroom 3	2.57m (8'5") max x 2.25m (7'5")

Gross internal floor area (m²): 77m²
EPC Rating: C

