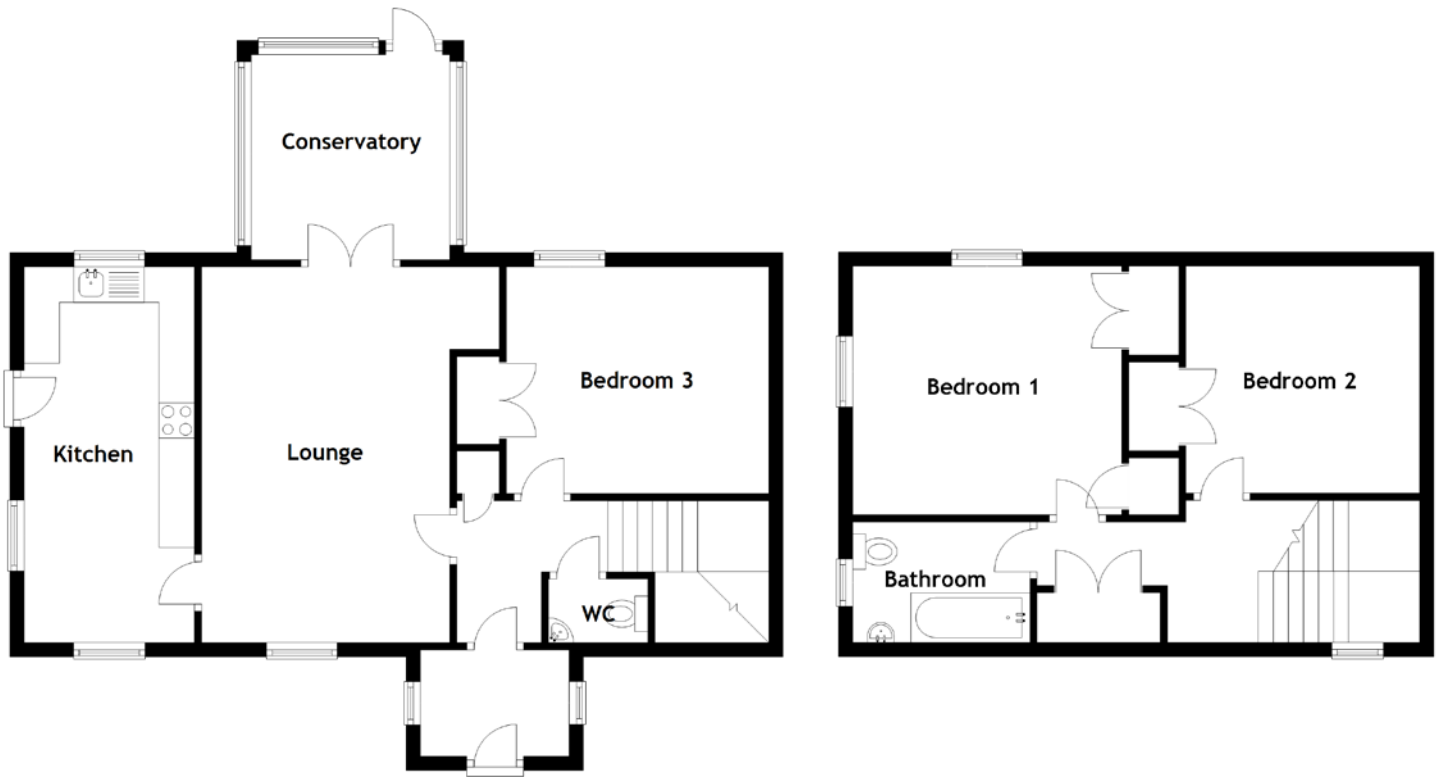


FLOOR PLAN, DIMENSIONS & MAP



Approximate Dimensions
(Taken from the widest point)

Lounge	5.30m (17'5") x 4.20m (13'9")
Kitchen	5.30m (17'5") x 2.40m (7'11")
Conservatory	2.90m (9'6") x 2.80m (9'2")
WC	1.40m (4'7") x 0.90m (2'11")

Bedroom 1	3.80m (12'5") x 3.50m (11'6")
Bedroom 2	3.30m (10'10") x 3.20m (10'6")
Bedroom 3	3.70m (12'2") x 3.20m (10'6")
Bathroom	2.50m (8'2") x 1.70m (5'7")

Gross internal floor area (m²): 108m²
EPC Rating: E

