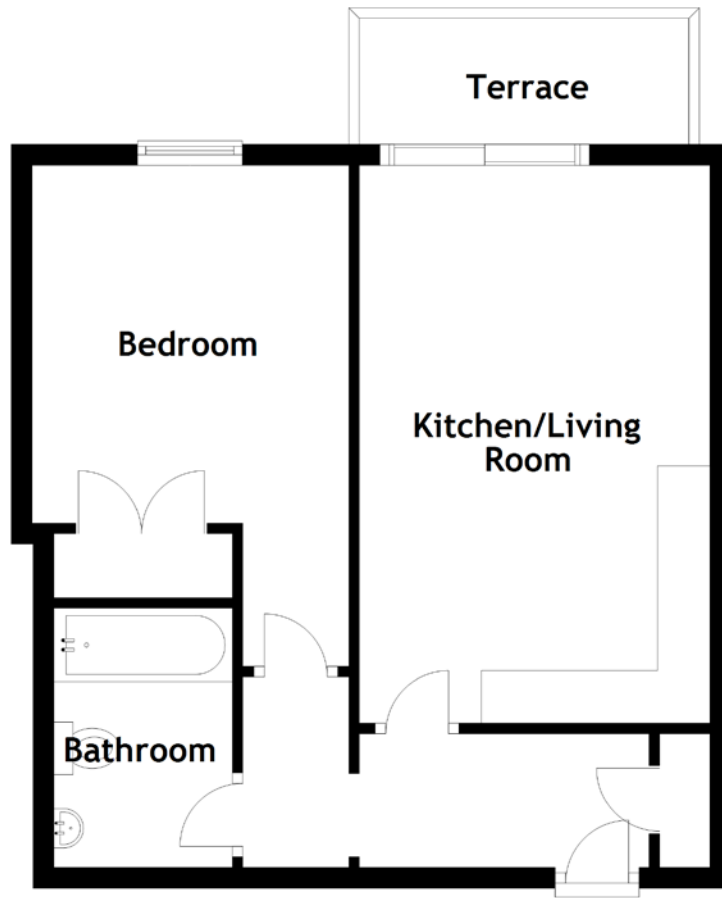


# FLOOR PLAN, DIMENSIONS & MAP



Approximate Dimensions (Taken from the widest point)

Bedroom 4.77m (15'8") x 3.02m (9'11")  
Bathroom 2.47m (8'1") x 1.70m (5'7")  
Kitchen/Living Room 5.31m (17'5") x 3.34m (10'11")  
Terrace 3.14m (10'4") x 1.30m (4'3")

Bedroom  
Bathroom

4.77m (15'8") x 3.02m (9'11")  
2.47m (8'1") x 1.70m (5'7")

Gross internal floor area (m<sup>2</sup>): 45m<sup>2</sup> | EPC Rating: C

