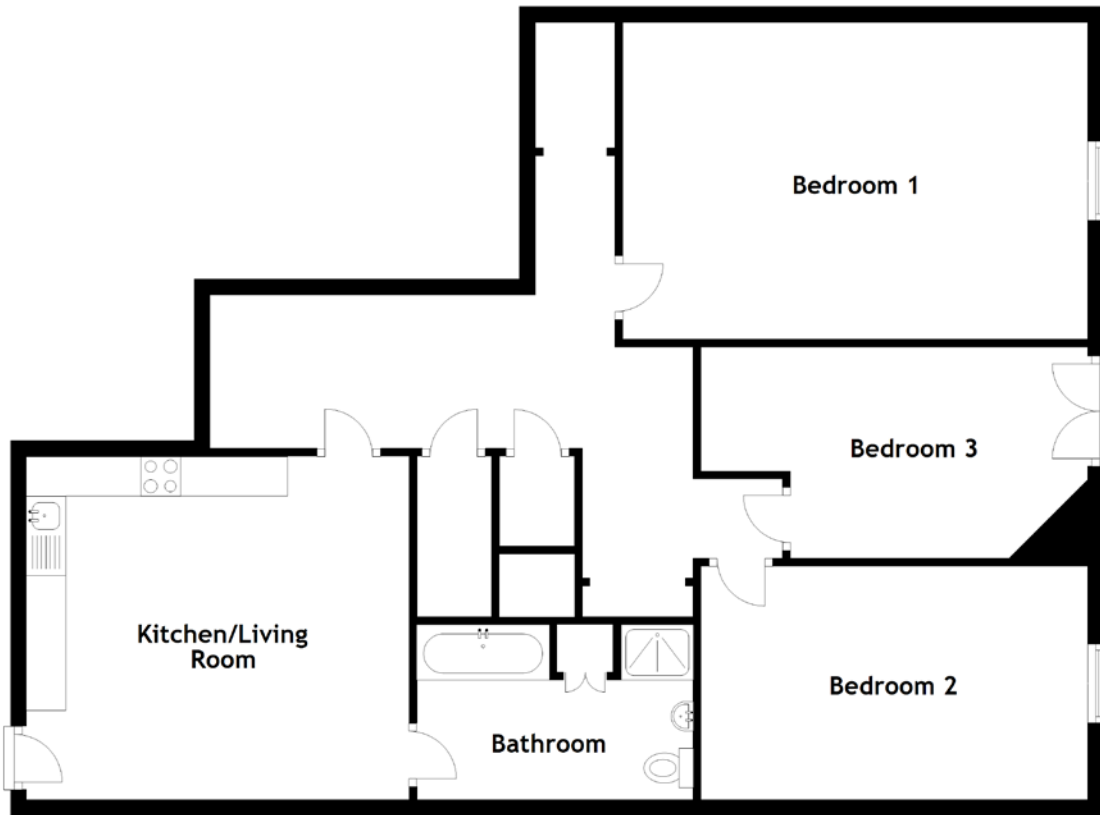


FLOOR PLAN, DIMENSIONS & MAP



Approximate Dimensions (Taken from the widest point)

Kitchen/Living Room 4.84m (15'11") x 4.35m (14'3")
 Bedroom 1 5.88m (19'3") x 4.01m (13'2")
 Bedroom 2 4.89m (16'1") x 2.96m (9'9")

Bedroom 3 4.89m (16'1") x 2.68m (8'10")
 Bathroom 3.50m (11'6") x 2.22m (7'3")

Gross internal floor area (m²): 107m²
 EPC Rating: C

