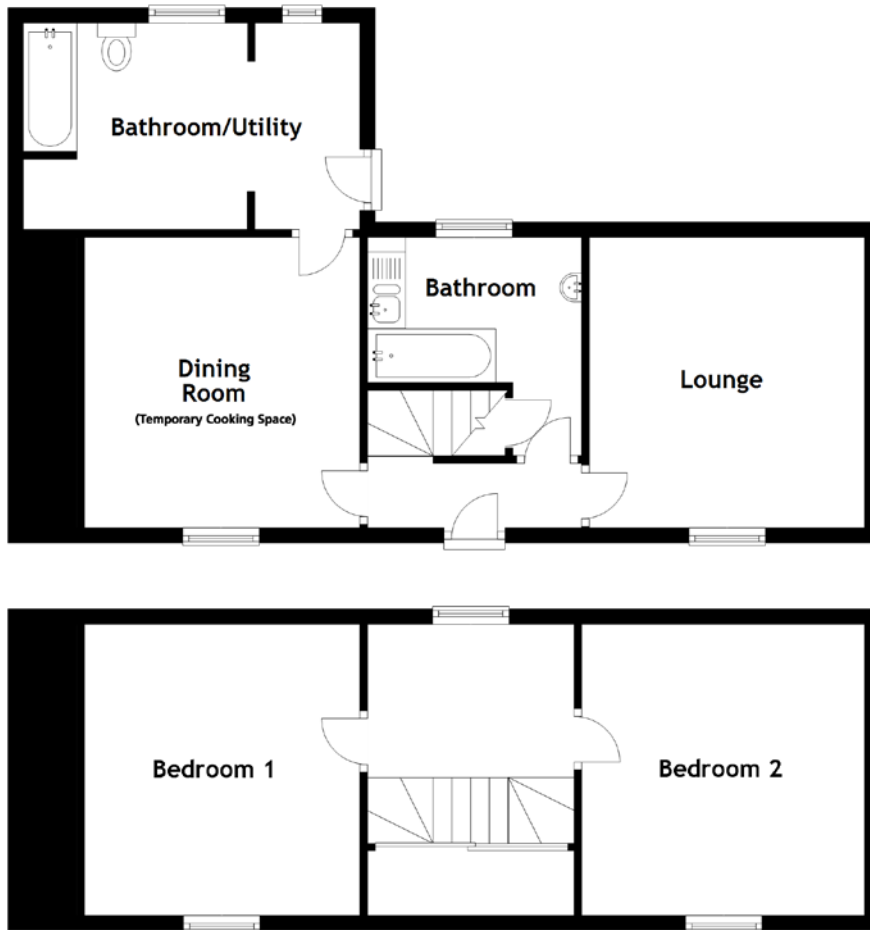


FLOOR PLAN, DIMENSIONS & MAP



Approximate Dimensions (Taken from the widest point)

Lounge	3.80m (12'6") x 3.60m (11'10")
Dining Room (Temp Cooking Space)	3.80m (12'6") x 3.60m (11'10")
Bathroom/Utility	4.40m (14'5") x 2.70m (8'10")
Bathroom	2.86m (9'4") x 2.80m (9'2")

Bedroom 1	3.80m (12'6") x 3.60m (11'10")
Bedroom 2	3.80m (12'6") x 3.70m (12'2")

Gross internal floor area (m²): 77m²

EPC Rating: G

