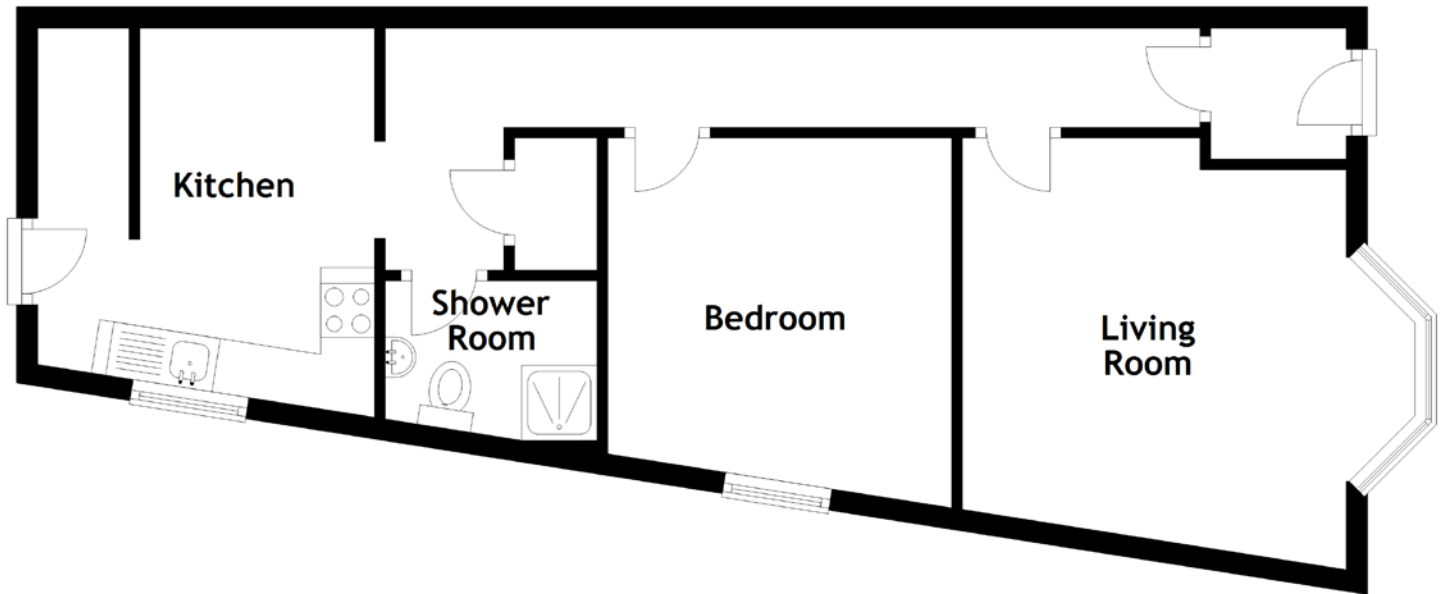


FLOOR PLAN, DIMENSIONS & MAP



Approximate Dimensions
(Taken from the widest point)

Living Room 3.99m (13'1") x 3.56m (11'8")
Kitchen 3.48m (11'5") x 3.12m (10'3")

Bedroom 3.44m (11'3") x 3.19m (10'6")
Shower Room 1.96m (6'5") x 1.59m (5'3")

Gross internal floor area (m²): 53m²
EPC Rating: D

