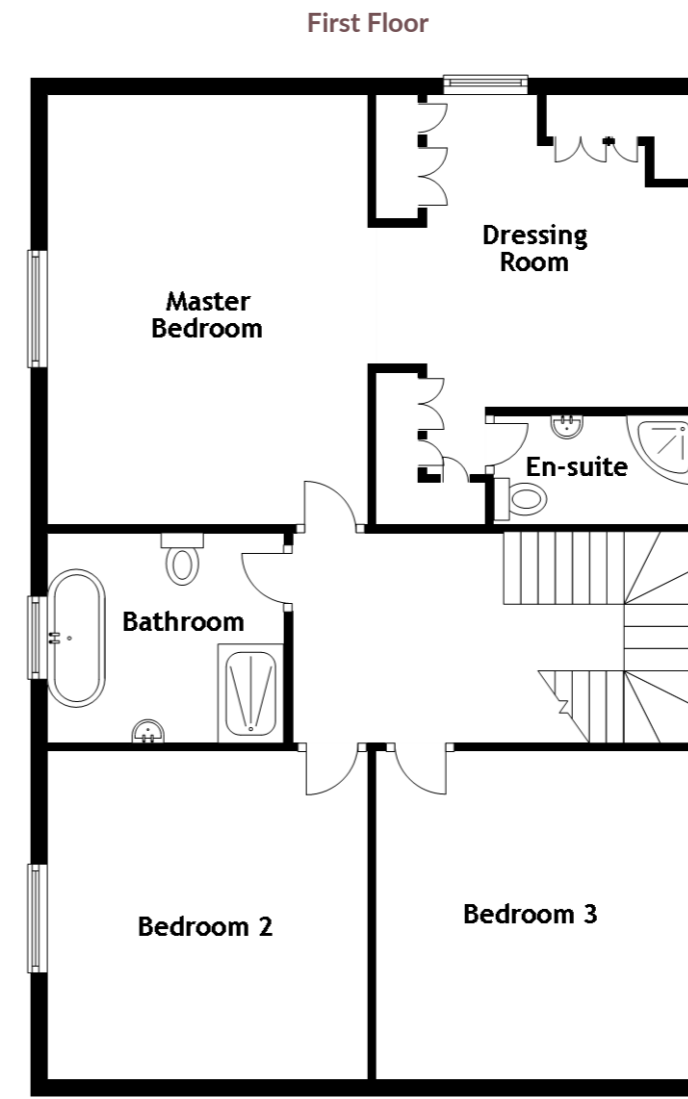
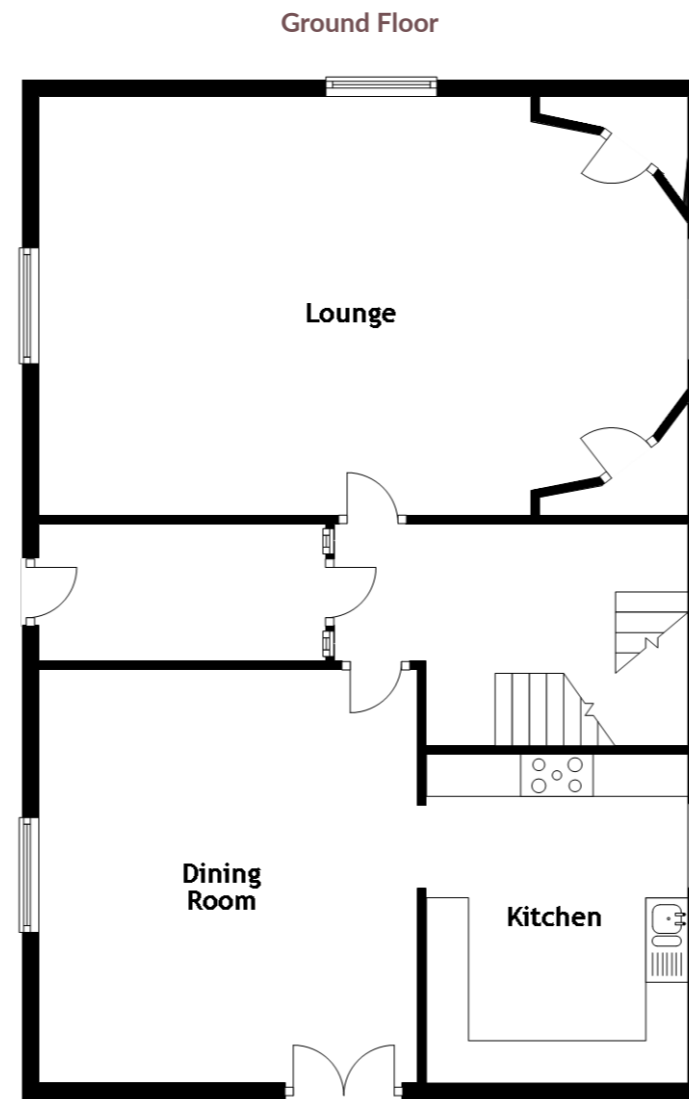
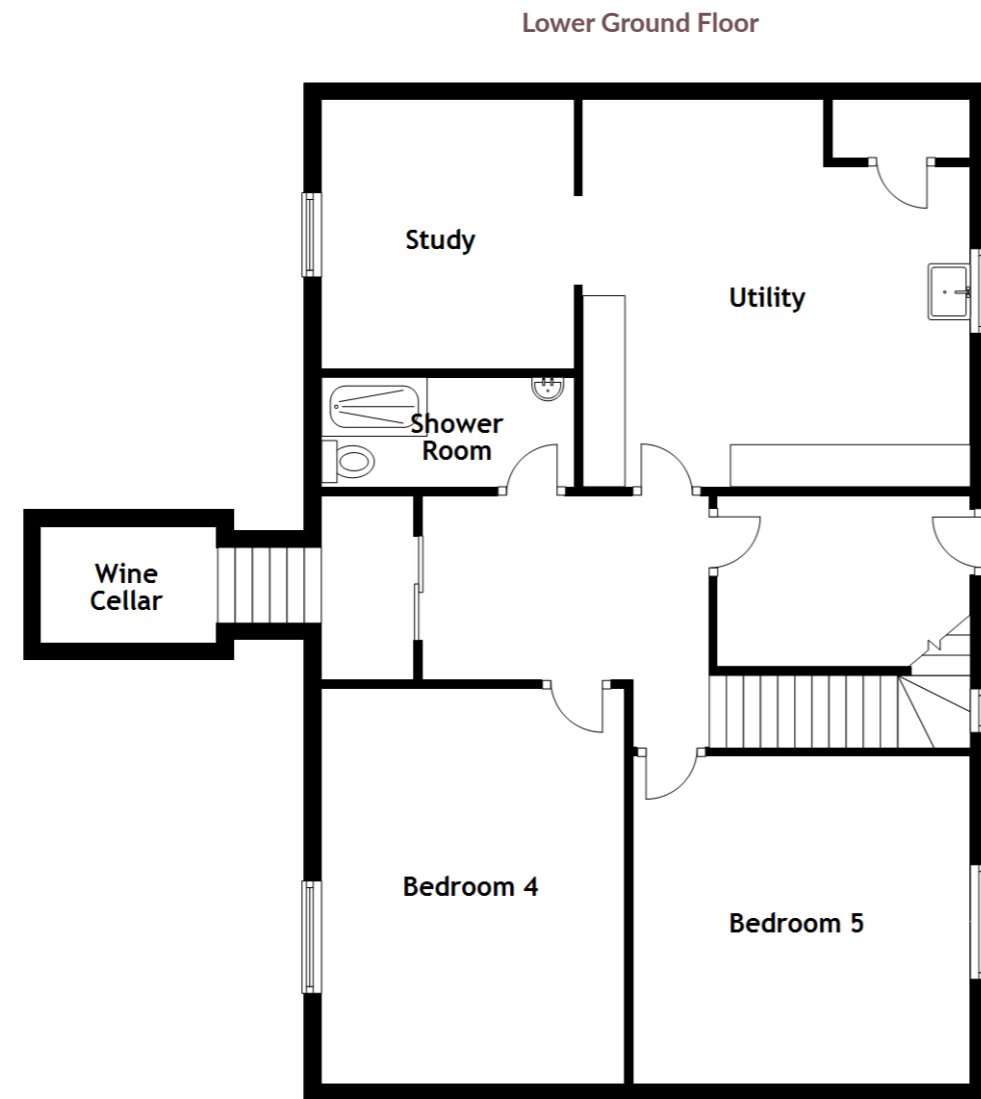
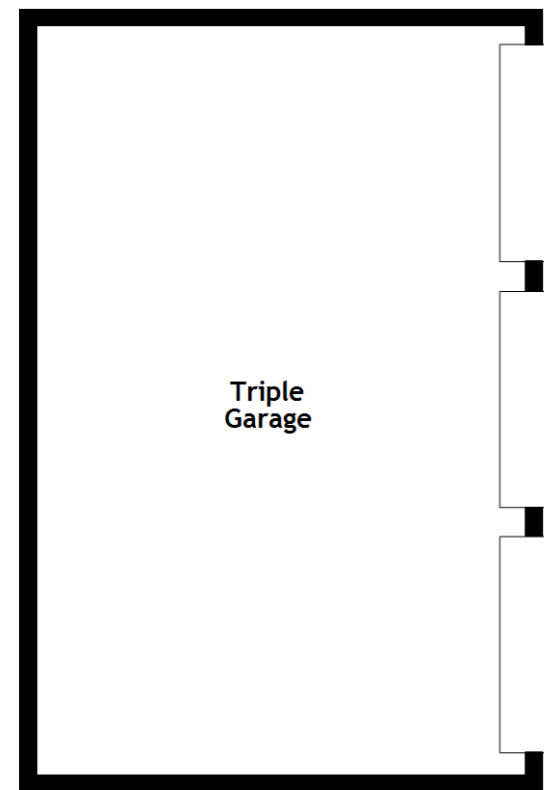


Floor Plans



Approximate Dimensions (Taken from the widest point)

Lower Ground Floor

Bedroom 4	4.70m (15'5") x 3.60m (11'10")
Bedroom 5	4.00m (13'1") x 3.90m (12'10")
Shower Room	2.80m (9'2") x 1.40m (4'7")
Utility	4.60m (15'1") x 4.60m (15'1")
Study	3.20m (10'6") x 3.00m (9'10")
Wine Cellar	2.10m (6'11") x 1.39m (4'7")

Ground Floor

Kitchen	3.90m (12'10") x 3.10m (10'2")
Dining Room	4.90m (16'1") x 4.50m (14'9")
Lounge	8.10m (26'7") x 4.90m (16'1")

First Floor

Bathroom	2.80m (9'2") x 2.50m (8'2")
Master Bedroom	5.10m (16'9") x 4.00m (13'1")
Dressing Room	4.50m (14'9") x 4.00m (13'1")
En-suite	2.40m (7'11") x 1.30m (4'3")
Bedroom 2	4.20m (13'9") x 4.00m (13'1")
Bedroom 3	4.20m (13'9") x 4.00m (13'1")

Gross internal floor area (m²): 303m²

EPC Rating: D

Extras: Floor coverings, light fittings, blinds, window dressings and integrated appliances.