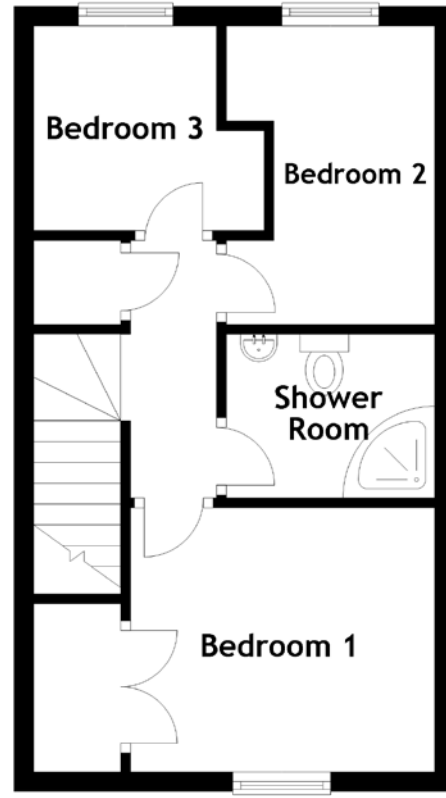
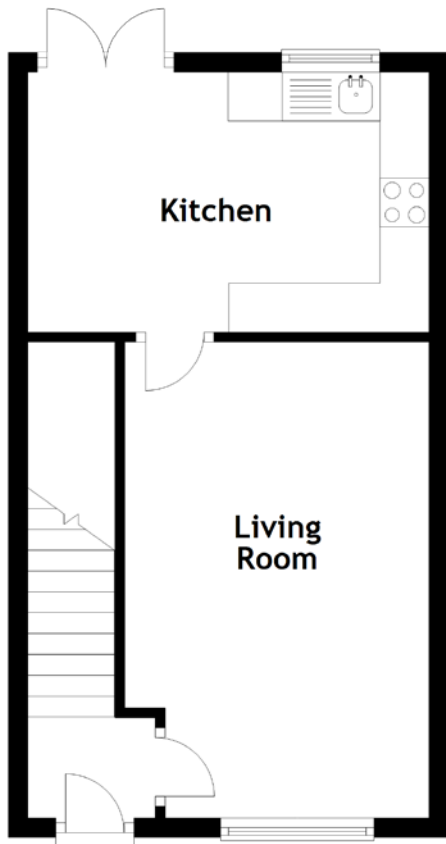


FLOOR PLAN, DIMENSIONS & MAP



Approximate Dimensions (Taken from the widest point)

Living Room 4.87m (16') x 3.11m (10'2")
 Kitchen 4.10m (13'5") x 2.66m (8'9")
 Shower Room 2.13m (7') x 1.67m (5'6")

Bedroom 1 3.11m (10'2") x 2.70m (8'10")
 Bedroom 2 3.05m (10') x 2.13m (7')
 Bedroom 3 2.36m (7'9") x 2.10m (6'10")

Gross internal floor area (m²): 60m² | EPC Rating: D

