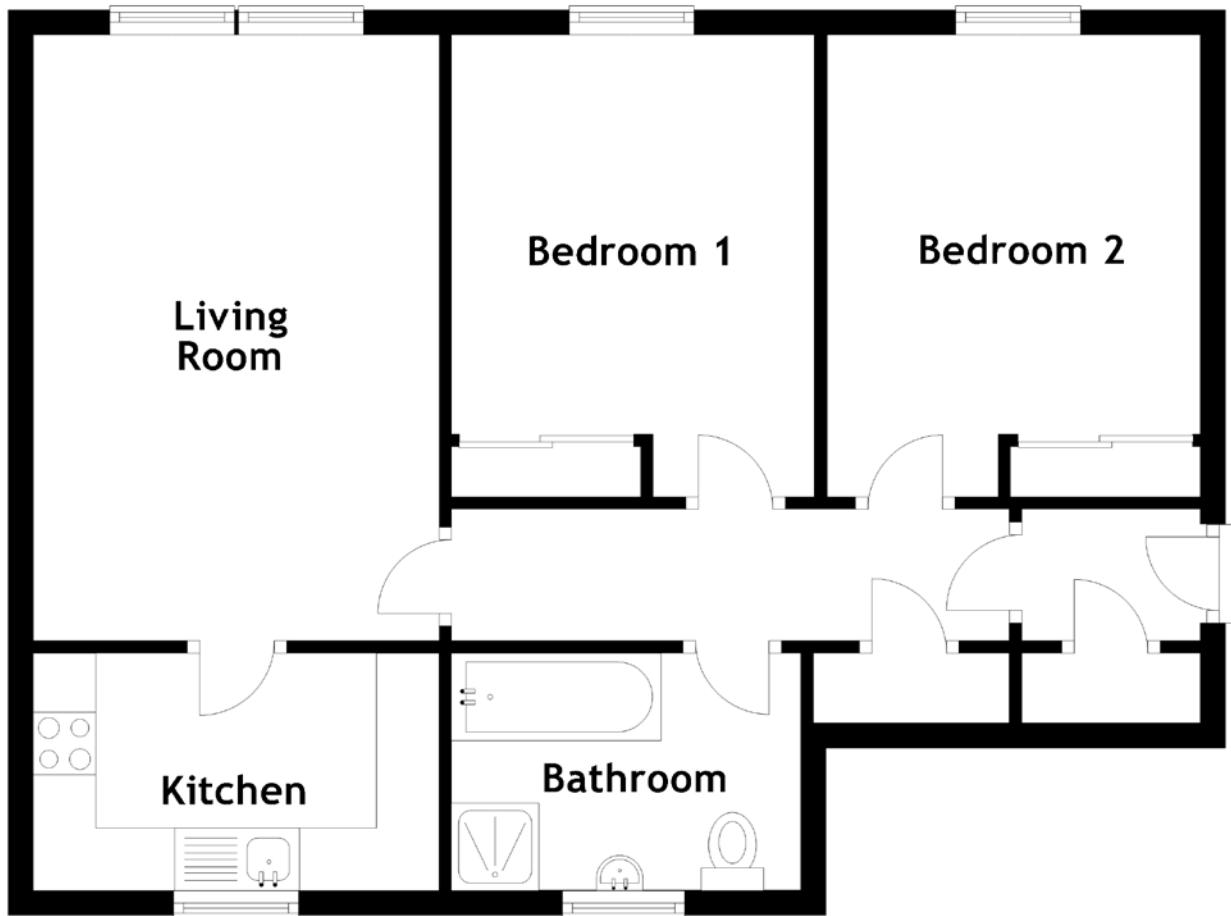


FLOOR PLAN, DIMENSIONS & MAP



Approximate Dimensions (Taken from the widest point)

Living Room 4.85m (15'11") x 3.25m (10'8")
 Kitchen 3.25m (10'8") x 1.90m (6'3")
 Bathroom 2.80m (9'2") x 1.90m (6'3")

Bedroom 1 3.70m (12'2") x 2.91m (9'7")
 Bedroom 2 3.70m (12'2") x 2.84m (9'4")

Gross internal floor area (m²): 61m²
 EPC Rating: D

