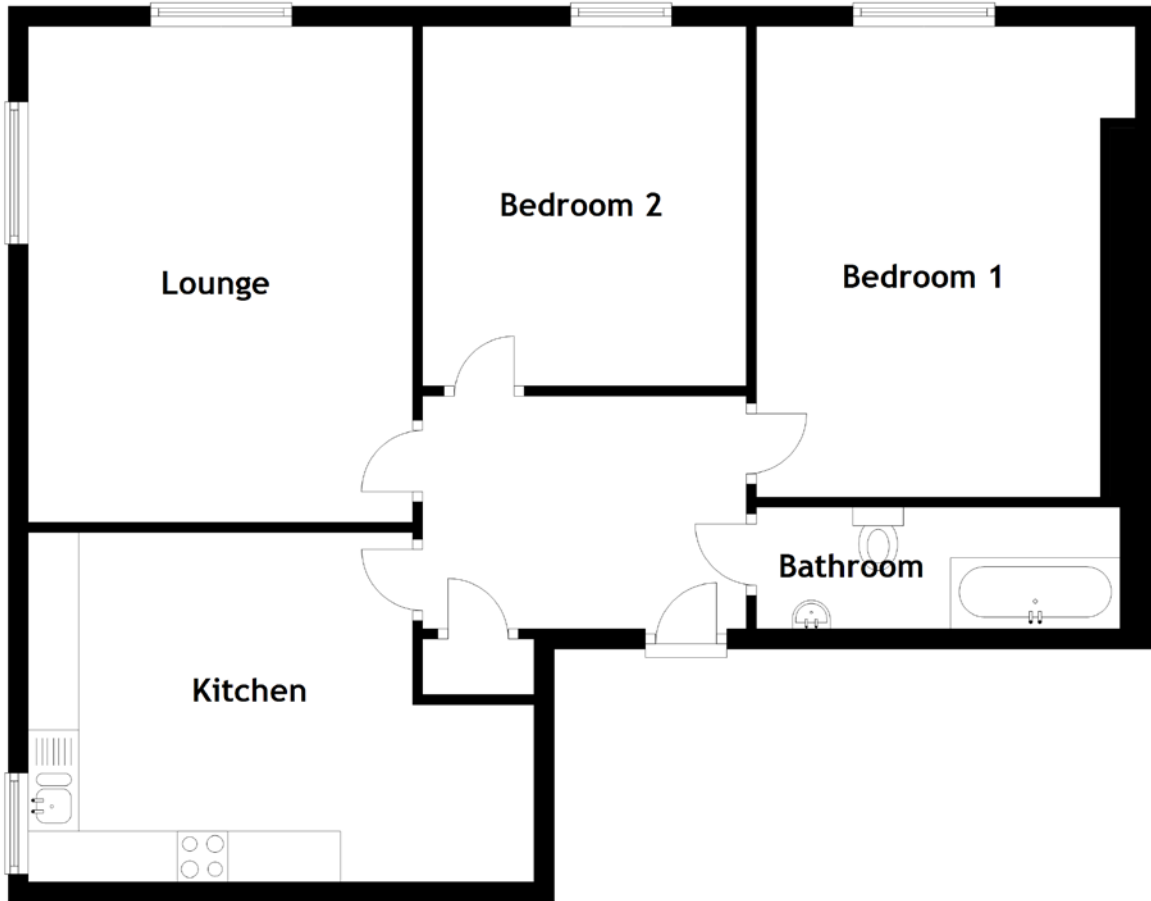


FLOOR PLAN, DIMENSIONS & MAP



Approximate Dimensions (Taken from the widest point)

Lounge 4.90m (16'1") x 3.80m (12'6")
 Kitchen 5.00m (16'5") x 3.45m (11'4")
 Bathroom 3.60m (11'10") x 1.20m (3'11")

Bedroom 1 4.65m (15'3") x 3.40m (11'2")
 Bedroom 2 3.55m (11'8") x 3.20m (10'6")

Gross internal floor area (m²): 78m²
 EPC Rating: C

