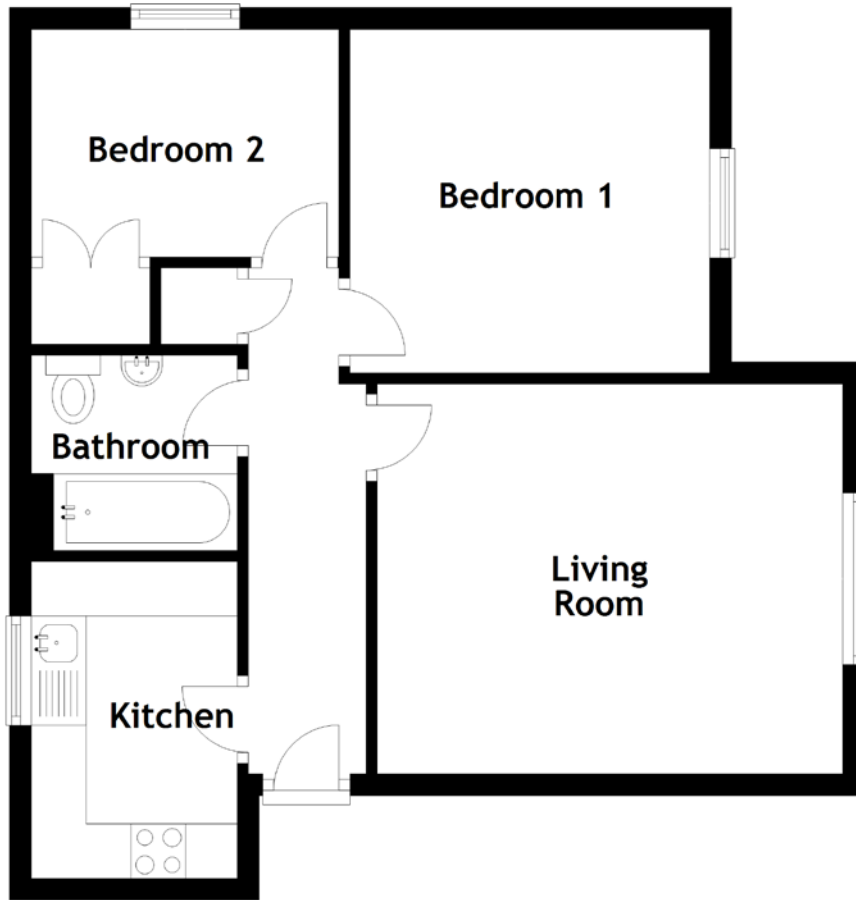


FLOOR PLAN, DIMENSIONS & MAP



Approximate Dimensions (Taken from the widest point)

Living Room 4.26m (14') x 3.57m (11'9")
 Kitchen 2.90m (9'6") x 1.88m (6'2")
 Bedroom 1 3.29m (10'10") x 3.15m (10'4")

Bedroom 2 2.81m (9'3") x 2.08m (6'10")
 Bathroom 1.88m (6'2") x 1.79m (5'10")

Gross internal floor area (m²): 48m²
 EPC Rating: D

