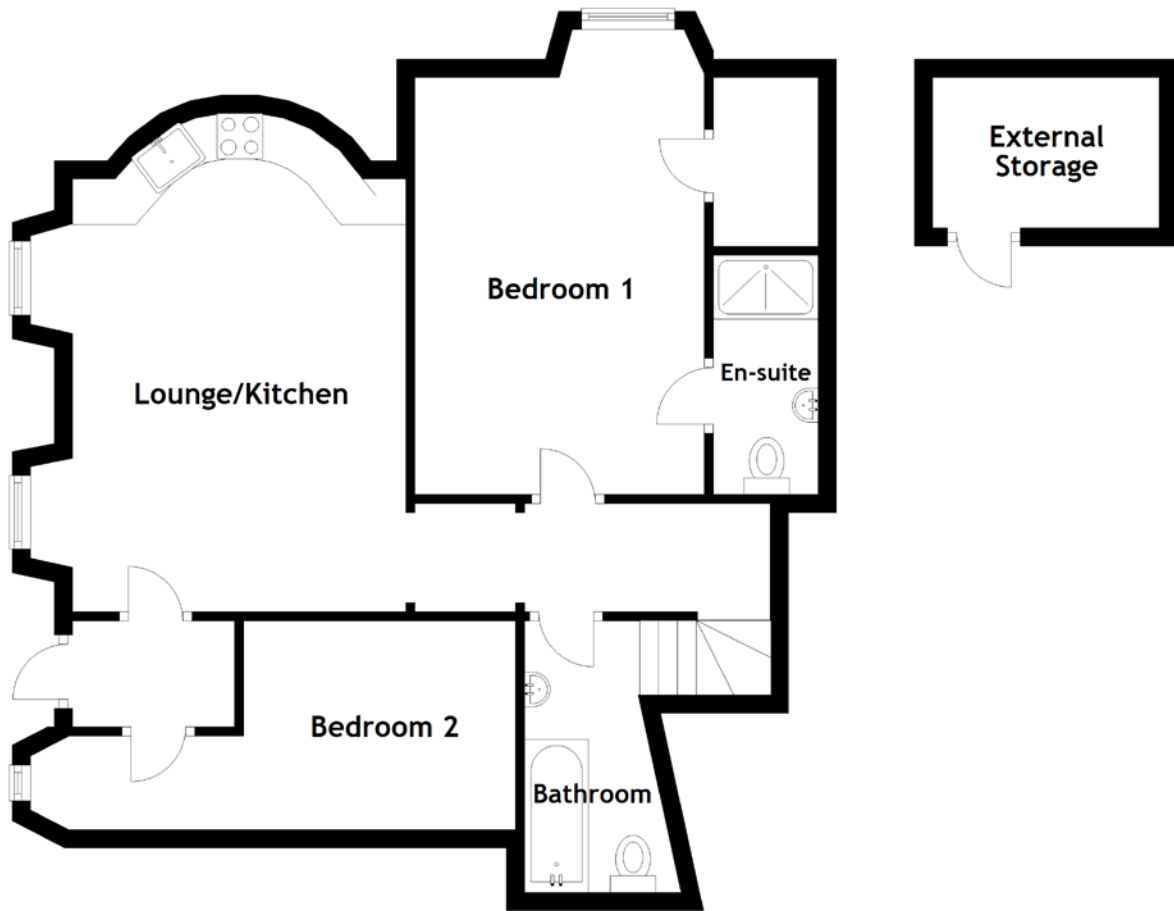


# FLOOR PLAN, DIMENSIONS & MAP



Approximate Dimensions  
(Taken from the widest point)

Lounge/Kitchen 5.43m (17'10") x 3.66m (12')  
 Bedroom 1 4.58m (15') x 3.18m (10'5")  
 En-suite 2.24m (7'4") x 1.15m (3'9")

Bedroom 2 4.86m (15'11") x 2.29m (7'6")  
 Bathroom 2.98m (9'9") x 2.68m (8'10")  
 External Storage 2.49m (8'2") x 1.65m (5'5")

Gross internal floor area (m<sup>2</sup>): 75m<sup>2</sup>  
 EPC Rating: C

