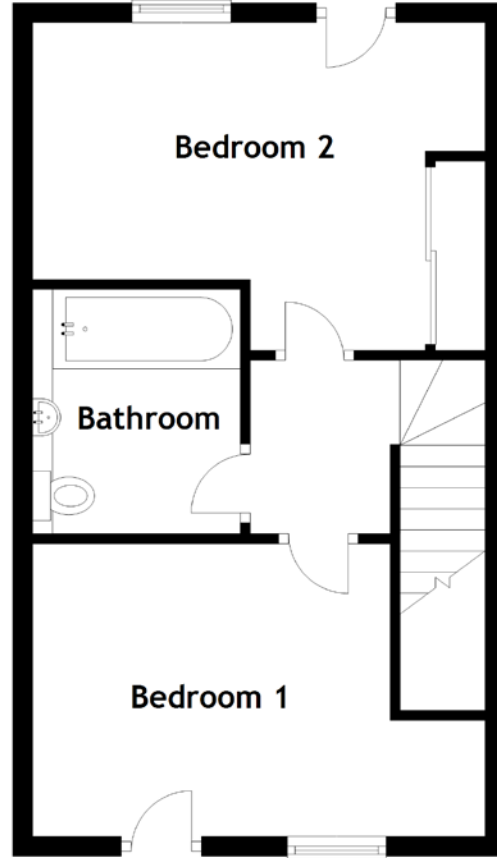
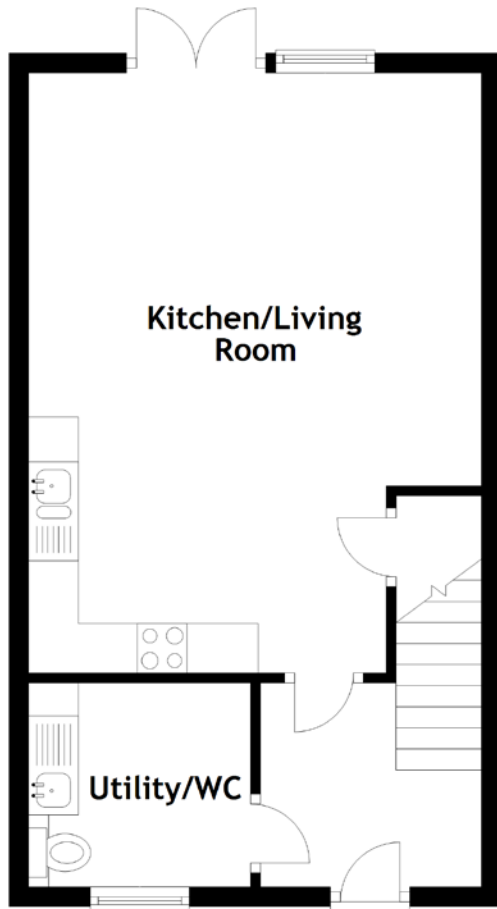


FLOOR PLAN, DIMENSIONS & MAP



Approximate Dimensions (Taken from the widest point)

Kitchen/Living Room 6.06m (19'11") x 4.57m (15')
 Utility/WC 2.24m (7'4") x 2.06m (6'9")
 Bathroom 2.47m (8'1") x 2.10m (6'11")

Bedroom 1 4.57m (15') x 2.96m (9'8")
 Bedroom 2 4.57m (15') x 3.31m (10'10")

Gross internal floor area (m²): 76m²
 EPC Rating: C

