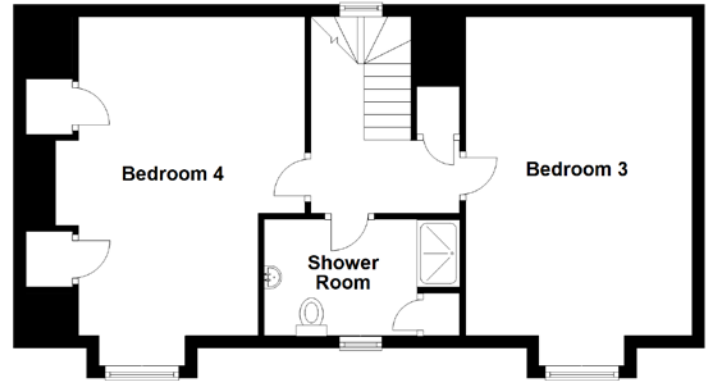
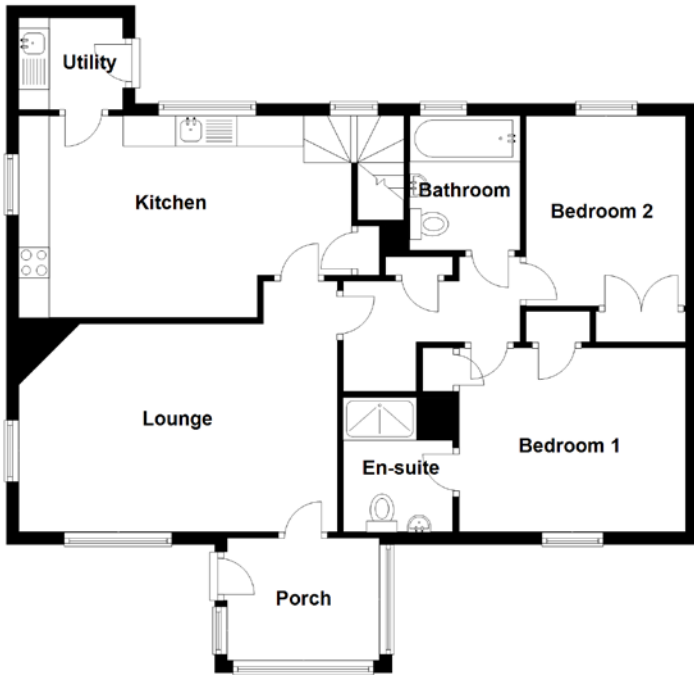


FLOOR PLAN, DIMENSIONS & MAP



Approximate Dimensions (Taken from the widest point)

Porch	2.50m (8'2") x 2.00m (6'7")
En-suite	2.20m (7'3") x 1.80m (5'11")
Lounge	5.20m (17'1") x 4.10m (13'5")
Kitchen	5.20m (17'1") x 3.30m (10'10")
Utility	1.70m (5'7") x 1.50m (4'11")
Bathroom	2.20m (7'3") x 1.80m (5'11")

Bedroom 1	3.70m (12'2") x 3.00m (9'10")
Bedroom 2	3.10m (10'2") x 2.60m (8'7")
Bedroom 3	5.70m (18'9") x 3.70m (12'2")
Bedroom 4	5.70m (18'9") x 3.70m (12'1")
Shower Room	3.20m (10'6") x 1.90m (6'3")

Gross internal floor area (m²): 145m²
EPC Rating: D

