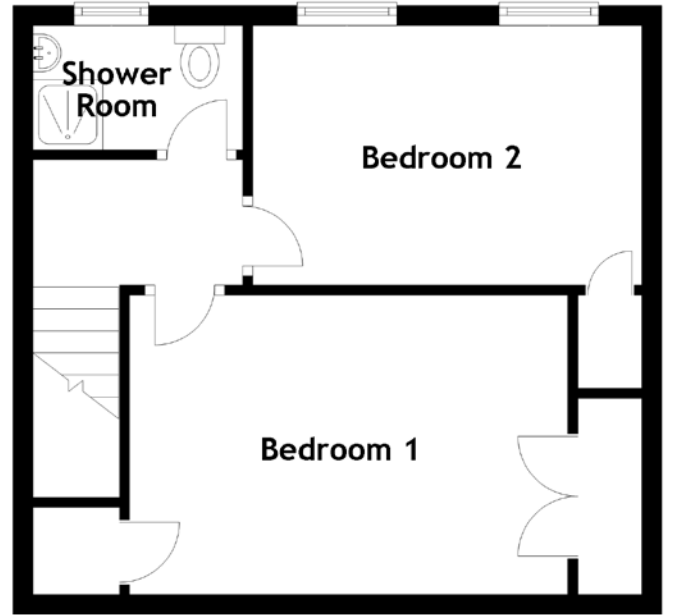
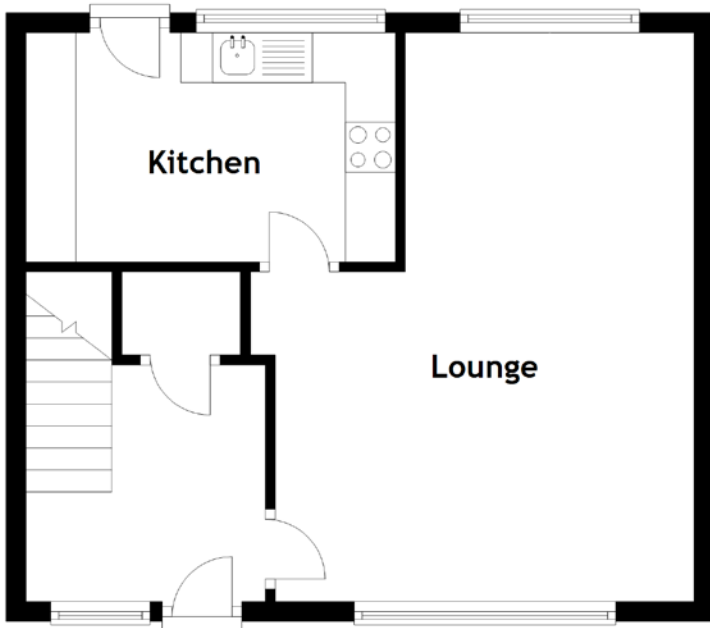


# FLOOR PLAN, DIMENSIONS & MAP



Approximate Dimensions (Taken from the widest point)

Lounge	5.70m (18'8") x 4.20m (13'9")
Kitchen	3.70m (12'2") x 2.30m (7'6")
Shower Room	2.10m (6'11") x 1.24m (4'1")

Bedroom 1	4.40m (14'5") x 3.00m (9'10")
Bedroom 2	3.90m (12'10") x 2.60m (8'6")

Gross internal floor area (m<sup>2</sup>): 71m<sup>2</sup>  
EPC Rating: C

