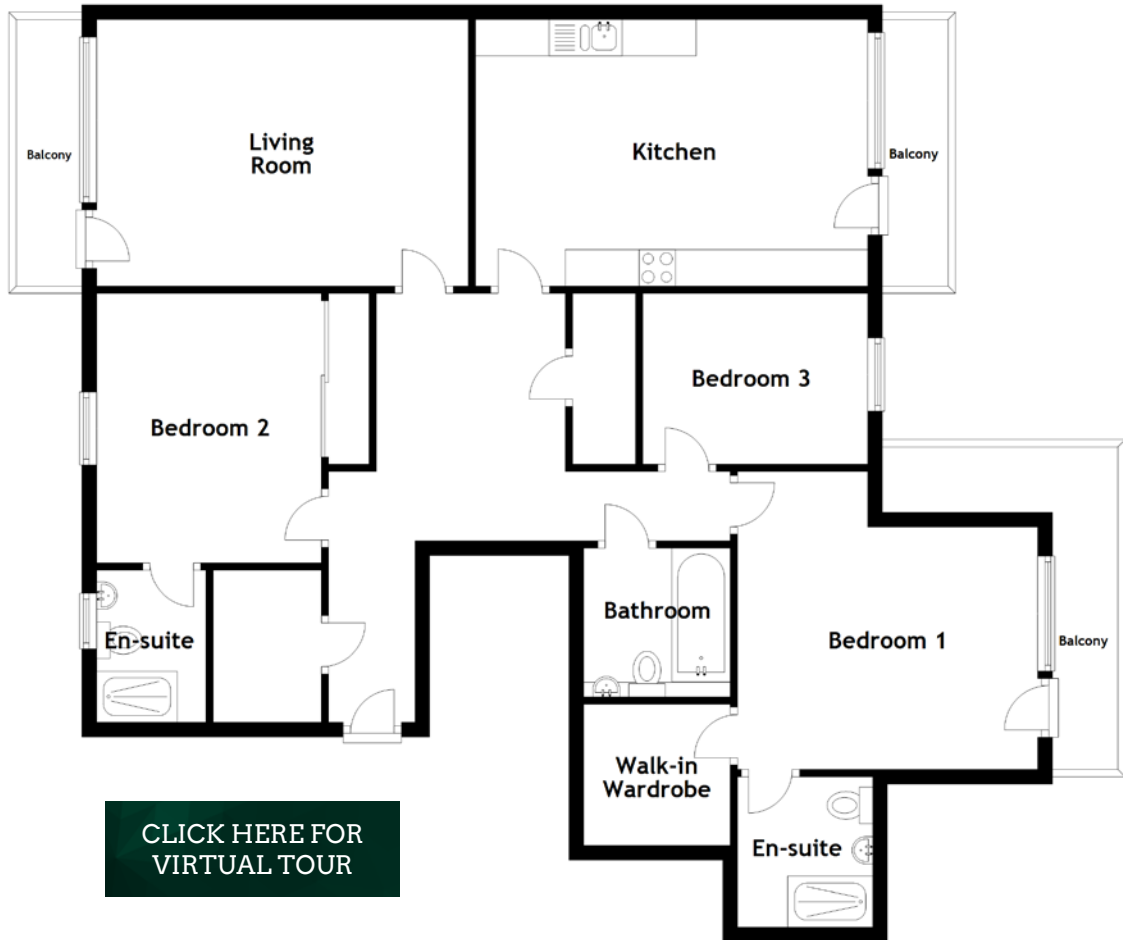


FLOOR PLAN, DIMENSIONS & MAP



[CLICK HERE FOR VIRTUAL TOUR](#)

Approximate Dimensions (Taken from the widest point)

Living Room 5.09m (16'8") x 3.65m (12')
 Kitchen 5.37m (17'7") x 3.65m (12')
 Bedroom 1 4.11m (13'6") x 4.08m (13'4")
 En-suite 2.06m (6'9") x 1.85m (6'1")
 Walk-in Wardrobe 2.01m (6'7") x 1.93m (6'4")

Bedroom 2 3.69m (12'1") x 3.08m (10'1")
 En-suite 2.08m (6'10") x 1.50m (4'11")
 Bedroom 3 3.08m (10'1") x 2.34m (7'8")
 Bathroom 2.04m (6'8") x 2.01m (6'7")

Gross internal floor area (m²):111m²
 EPC Rating: B

