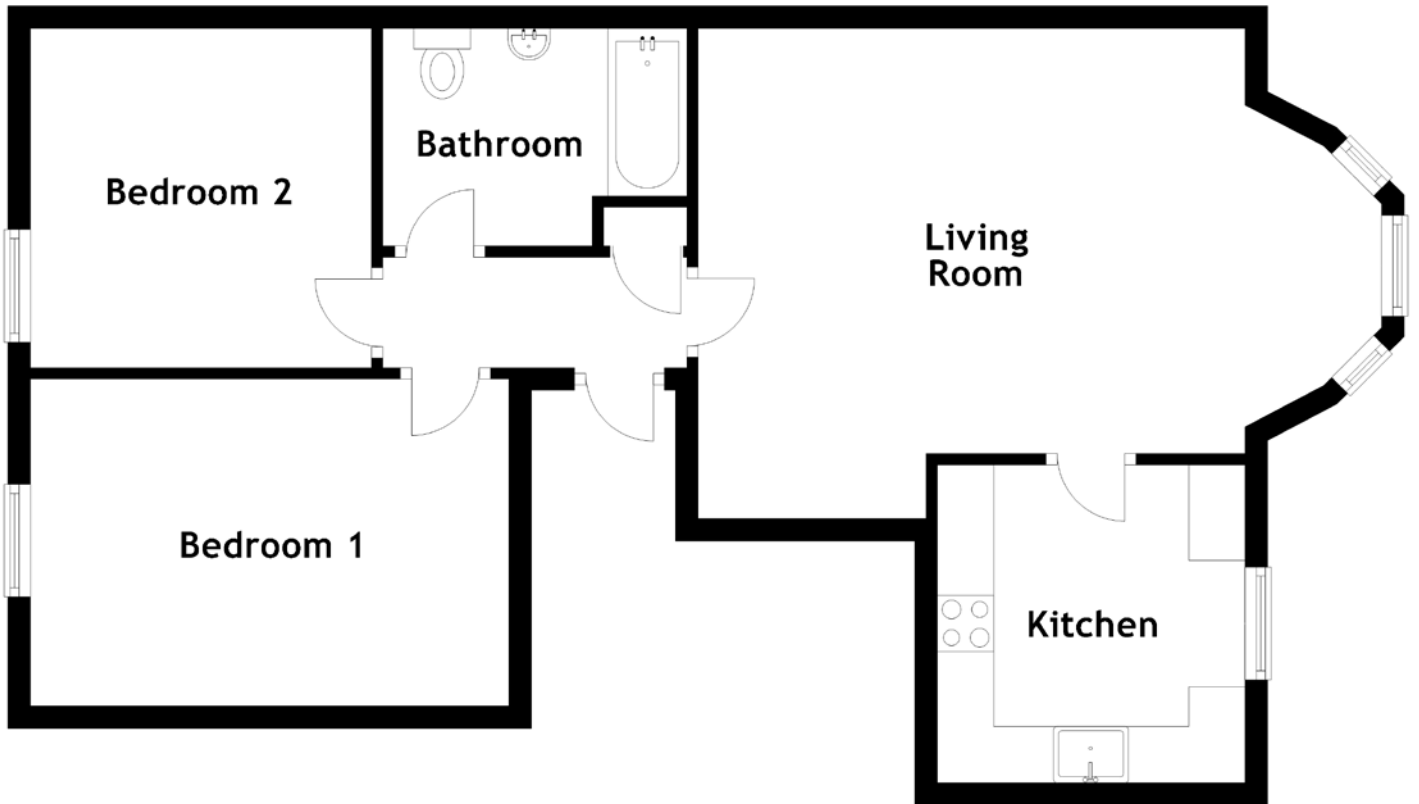


# FLOOR PLAN, DIMENSIONS & MAP



Approximate Dimensions  
(Taken from the widest point)

Living Room      6.07m (19'11") x 4.35m (14'3")  
Kitchen            2.82m (9'3") x 2.73m (9')

Bedroom 1            4.25m (13'11") x 2.90m (9'6")  
Bedroom 2            3.03m (9'11") x 3.01m (9'11")  
Bathroom            2.70m (8'10") x 1.93m (6'4")

Gross internal floor area (m<sup>2</sup>): 63m<sup>2</sup> | EPC Rating: C

