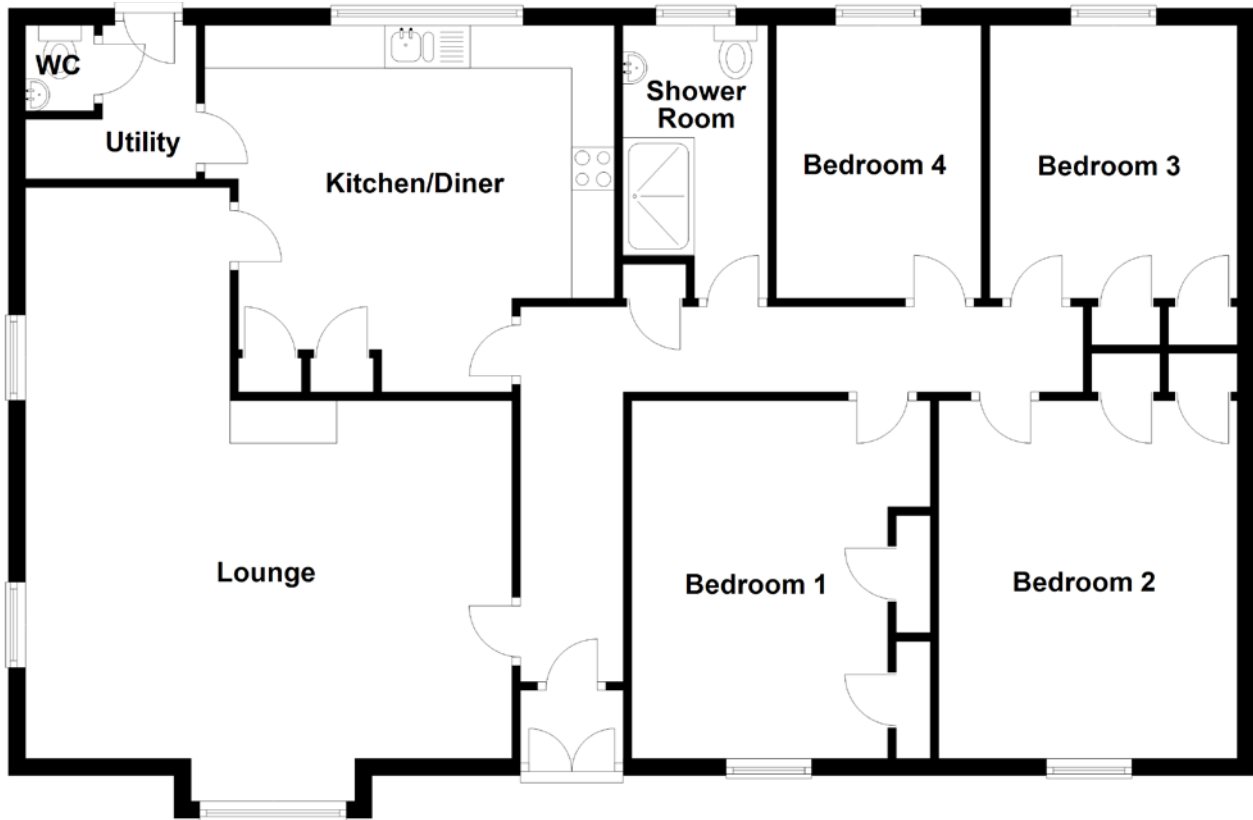


FLOOR PLAN, DIMENSIONS & MAP



Approximate Dimensions
(Taken from the widest point)

Lounge	6.70m (22') x 5.70m (18'8")
Kitchen/Diner	4.80m (15'9") x 4.30m (14'1")
Utility	2.00m (6'7") x 1.80m (5'11")
WC	1.00m (3'3") x 0.80m (2'8")

Bedroom 1	4.20m (13'9") x 3.50m (11'6")
Bedroom 2	4.20m (13'9") x 3.50m (11'6")
Bedroom 3	3.20m (10'6") x 2.90m (9'6")
Bedroom 4	3.20m (10'6") x 2.40m (7'10")
Shower Room	3.20m (10'6") x 1.70m (5'7")

Gross internal floor area (m²): 124m² | EPC Rating: E

