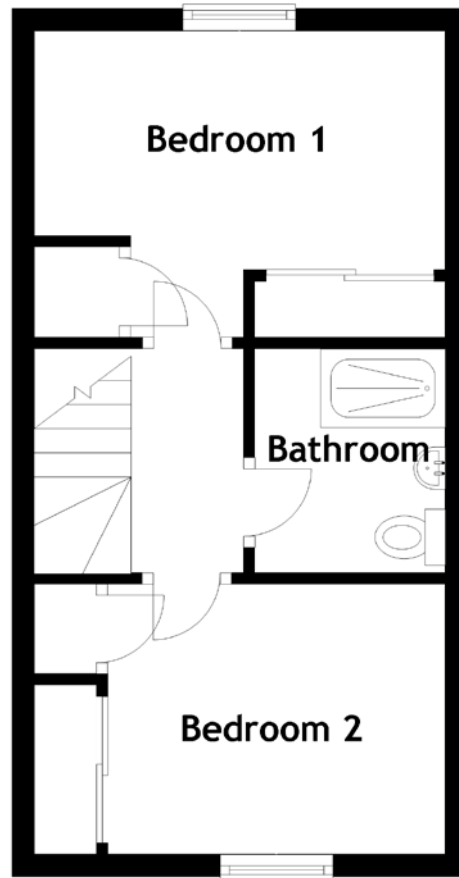
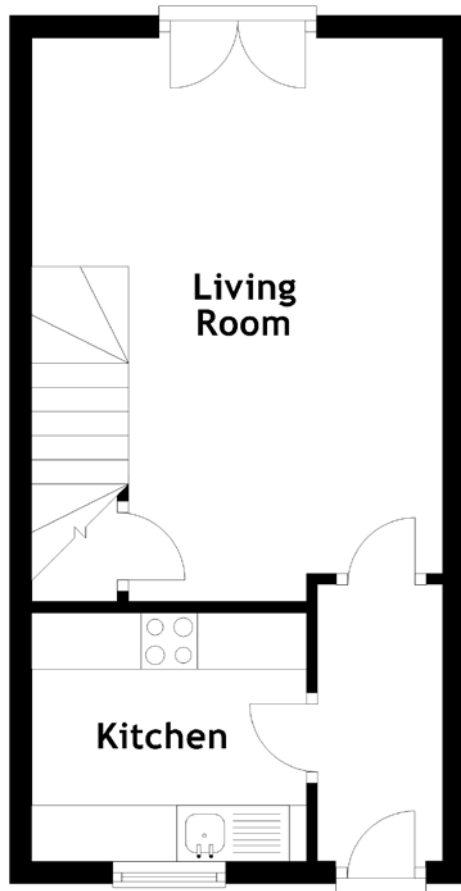


FLOOR PLAN, DIMENSIONS & MAP



Approximate Dimensions (Taken from the widest point)

Living Room	5.02m (16'6") x 3.65m (12')
Kitchen	2.44m (8') x 2.21m (7'3")
Bedroom 1	3.65m (12') x 2.73m (8'11")

Bedroom 2	3.00m (9'10") x 2.40m (7'11")
Bathroom	2.00m (6'7") x 1.69m (5'7")

Gross internal floor area (m²): 55m²
EPC Rating: C

