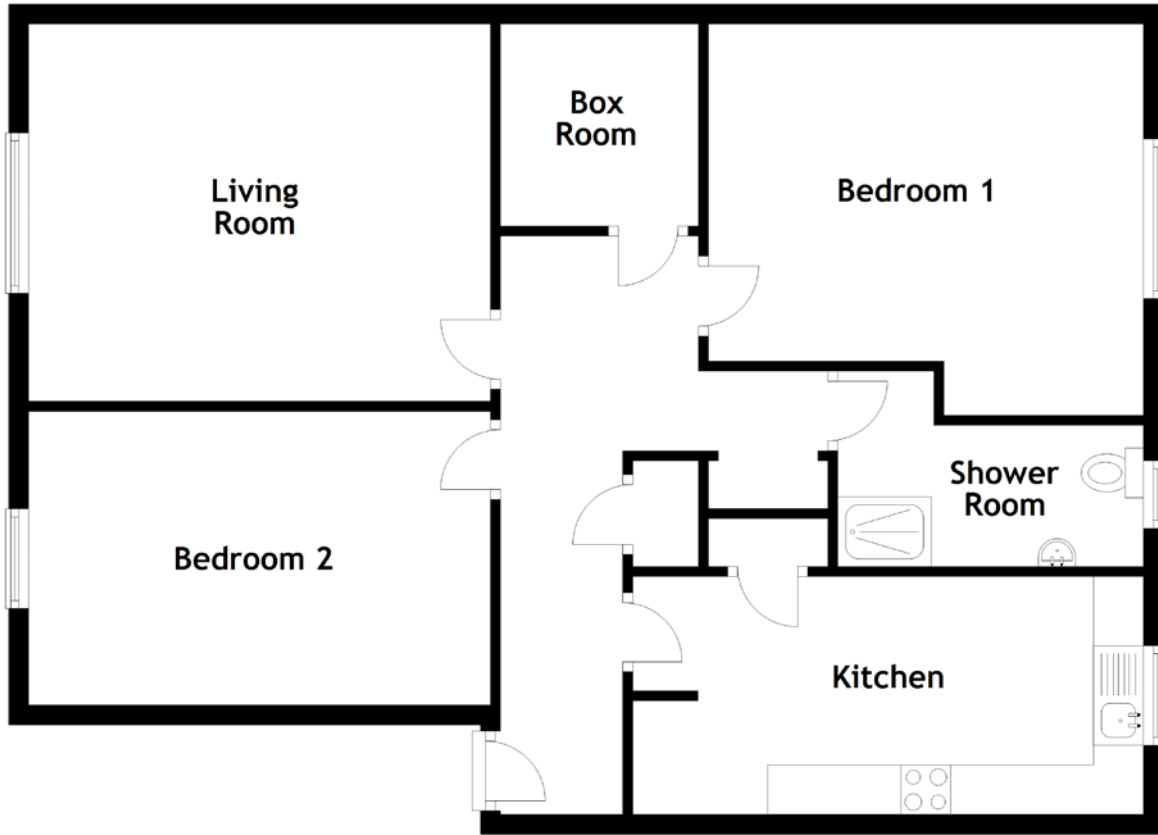


FLOOR PLAN, DIMENSIONS & MAP



Approximate Dimensions
(Taken from the widest point)

Living Room 4.64m (15'3") x 3.79m (12'5")
 Kitchen 5.13m (16'10") x 2.39m (7'10")
 Shower Room 3.07m (10'1") x 1.96m (6'5")

Bedroom 1 4.37m (14'4") x 3.93m (12'11")
 Bedroom 2 4.64m (15'3") x 2.95m (9'8")
 Box Room 2.03m (6'8") x 1.99m (6'6")

Gross internal floor area (m²): 90m²
 EPC Rating: C

