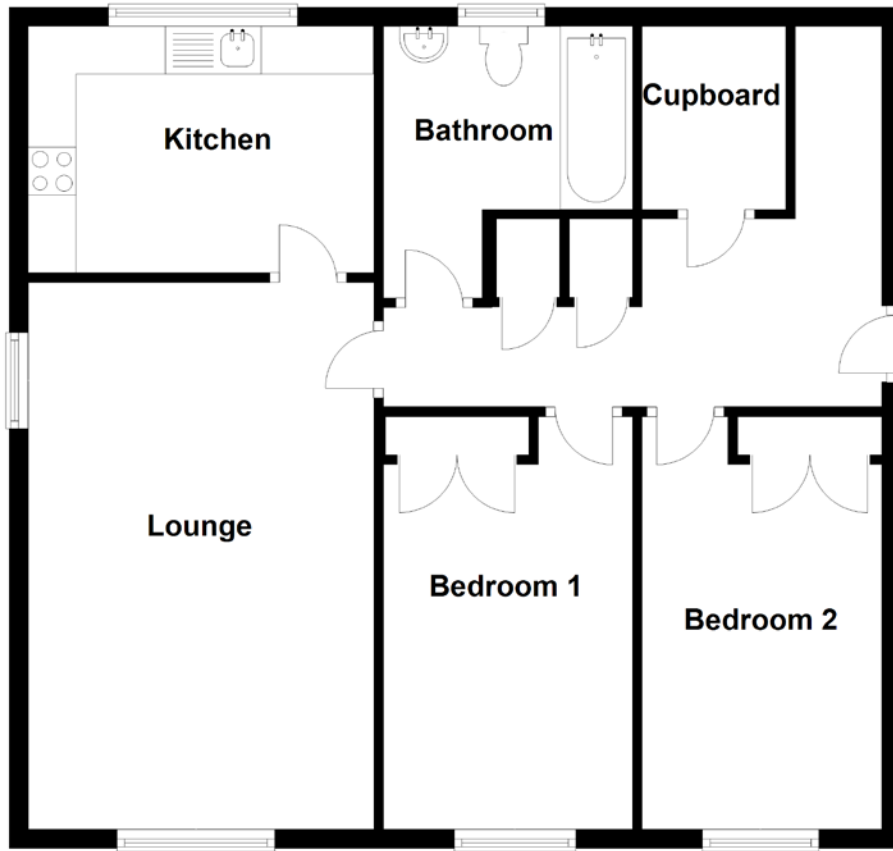


FLOOR PLAN, DIMENSIONS & MAP



Approximate Dimensions (Taken from the widest point)

Lounge	5.70m (18'8") x 3.60m (11'10")
Kitchen	3.60m (11'10") x 2.20m (7'3")
Bathroom	2.60m (8'6") x 2.51m (8'3")
Bedroom 1	4.30m (14'1") x 2.60m (8'6")
Bedroom 2	4.30m (14'1") x 2.50m (8'2")

Gross internal floor area (m²): 74m²
EPC Rating: D

EXTRAS (Included in the sale): The property will be sold inclusive of all floor coverings, blinds curtains and light fittings. All further electrical and soft furnishings are available by separate negotiation.

