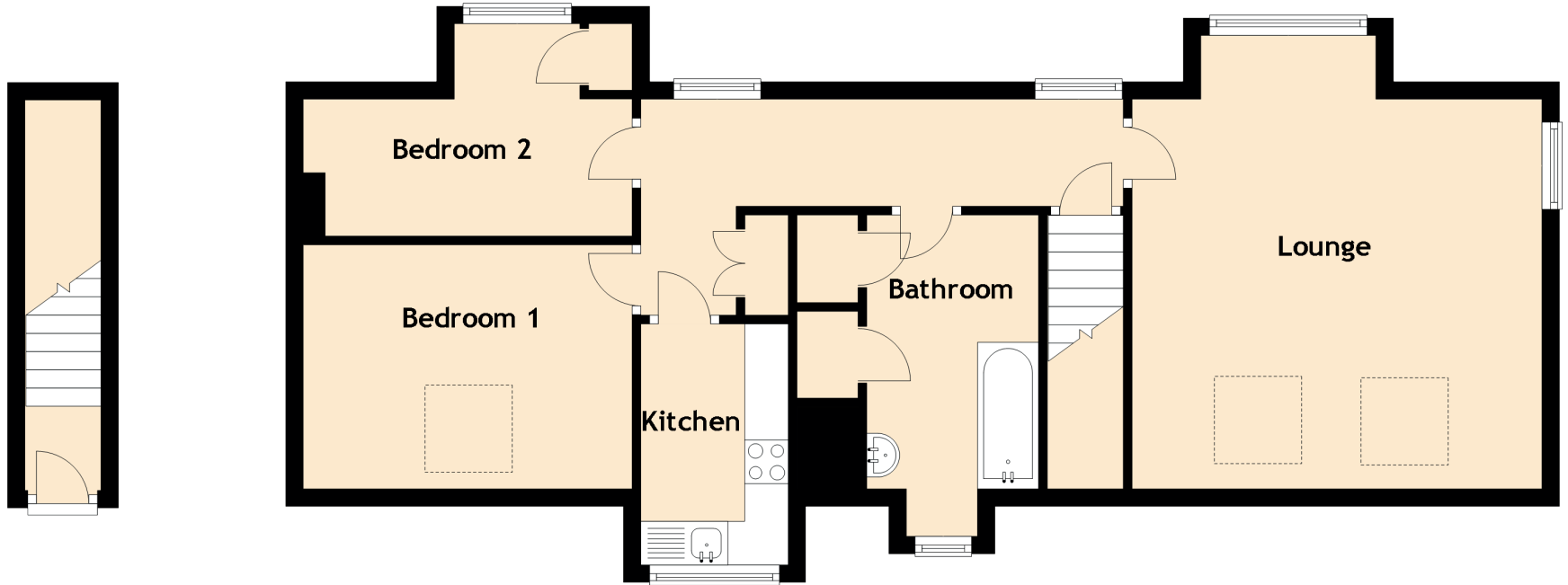


# 45 Station Road

KIRKLISTON, EH29 9BB



Approximate Dimensions (Taken from the widest point)

Lounge	5.34m (17'6") x 4.70m (15'5")
Kitchen	2.77m (9'1") x 1.69m (5'7")
Bedroom 1	3.60m (11'10") x 2.80m (9'2")
Bedroom 2	3.77m (12'5") x 2.44m (8')
Bathroom	3.68m (12'1") x 1.97m (6'6")