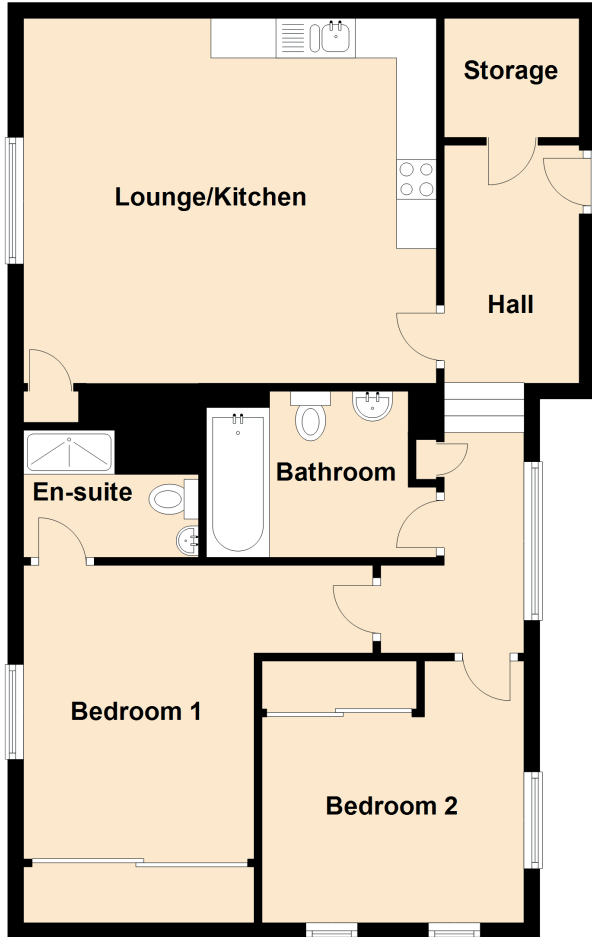


5 Murtle Mill

NORTH DEESIDE ROAD, BIELDSIDE, ABERDEEN, AB15 9EE



Approximate Dimensions (Taken from the widest point)

Hall	6.40m (21') x 1.80m (5'11")
Storage	1.70m (5'7") x 1.50m (4'11")
Lounge/Kitchen	5.20m (17'1") x 4.60m (15'1")
Bedroom 1	4.40m (14'5") x 3.30m (10'10")
En-suite	2.10m (6'11") x 1.60m (5'3")
Bedroom 2	3.30m (10'10") x 3.30m (10'10")
Bathroom	2.90m (9'6") x 1.80m (5'11")