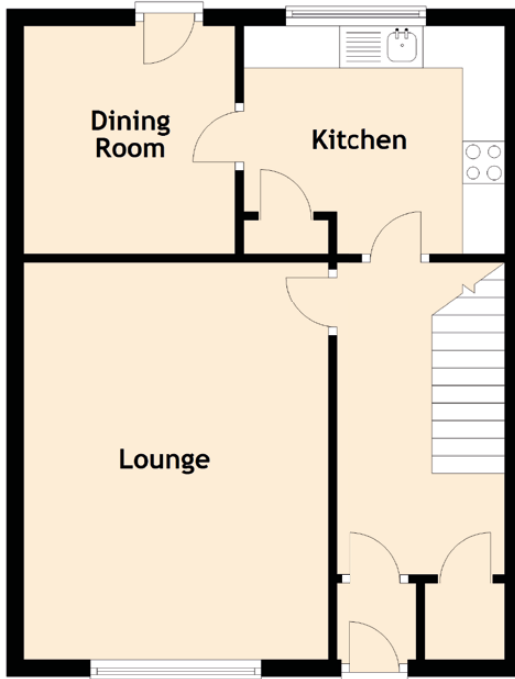


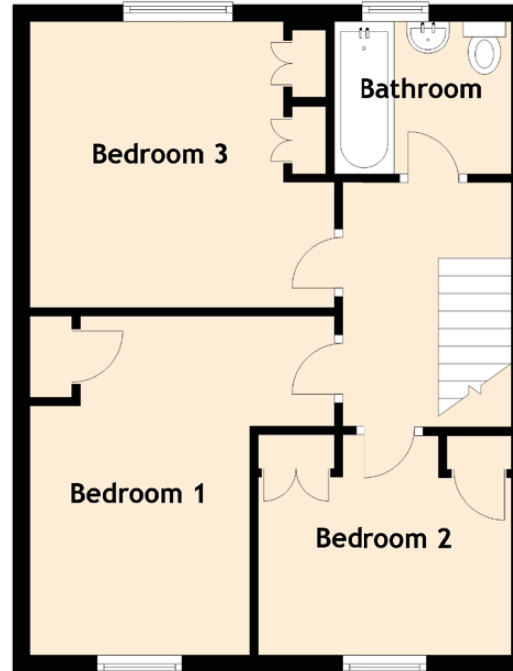
# 15 Smyllum Park

LANARK, ML11 7BX

Ground Floor



First Floor



Approximate Dimensions (Taken from the widest point)

Lounge	4.70m (15'5") x 3.60m (11'10")
Kitchen	3.10m (10'2") x 2.70m (8'10")
Dining Room	2.70m (8'10") x 2.50m (8'2")
Bedroom 1	4.00m (13'1") x 3.60m (11'10")
Bedroom 2	3.00m (9'10") x 2.60m (8'6")
Bedroom 3	3.60m (11'10") x 3.20m (10'6")
Bathroom	2.10m (6'11") x 1.80m (5'11")

Gross internal floor area (m<sup>2</sup>): 80m<sup>2</sup>