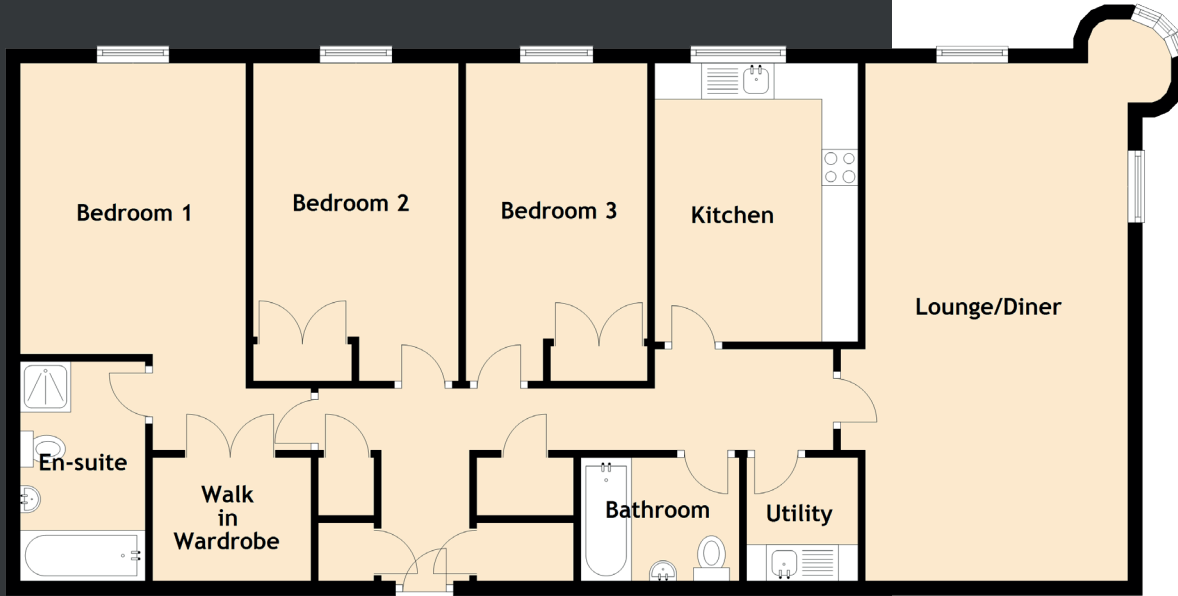


Specifications & Details

FLOOR PLAN, DIMENSIONS & MAP



Approximate Dimensions
(Taken from the widest point)

Lounge/Diner	7.15m (23'5") x 3.97m (13')
Kitchen	3.85m (12'8") x 2.81m (9'3")
Utility	1.70m (5'7") x 1.54m (5'1")
Bedroom 1	5.35m (17'7") x 3.12m (10'3")
En-suite	3.03m (9'11") x 1.73m (5'8")
Bedroom 2	4.65m (15'3") x 2.84m (9'4")
Bedroom 3	4.65m (15'3") x 2.51m (8'3")
Bathroom	2.19m (7'2") x 1.70m (5'7")

Gross internal floor area (m²): 113m²

EPC Rating: C

Extras (Included in the sale): Three bed frames and all fixtures and fittings, including blinds, curtains, light fittings, carpets and fitted floor coverings. Please note, other items may be available through separate negotiation.

