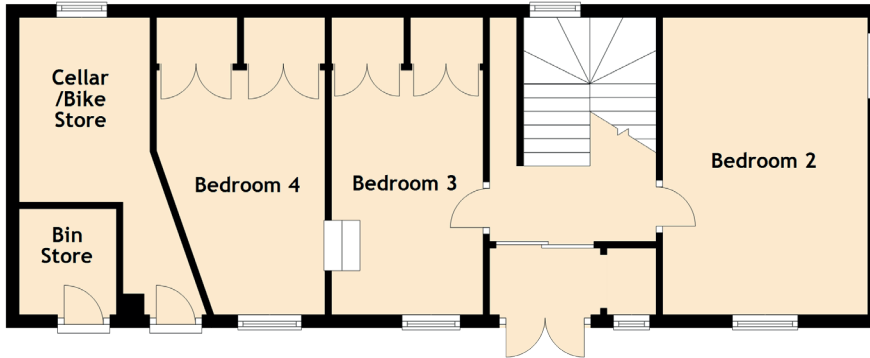


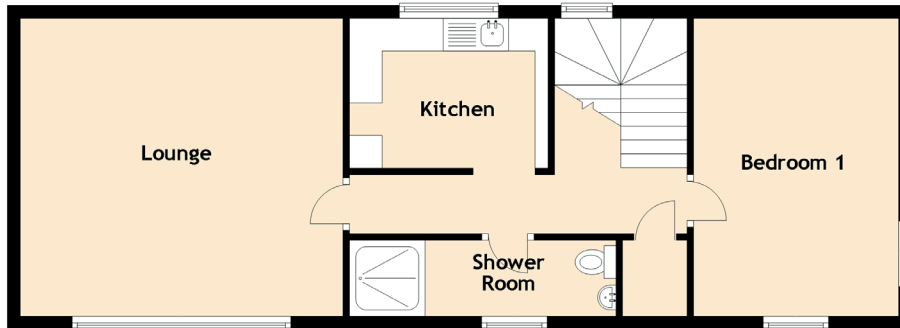
9 Chanonry Wynd

BRECHIN, ANGUS, DD9 6JS

Ground Floor



First Floor



Approximate Dimensions (Taken from the widest point)

Lounge	4.94m (16'2") x 4.75m (15'7")
Kitchen	3.04m (10') x 2.29m (7'6")
Bedroom 1	4.76m (15'7") x 3.32m (10'11")
Bedroom 2	4.55m (14'11") x 3.14m (10'4")
Bedroom 3	3.74m (12'3") x 2.32m (7'7")
Bedroom 4	3.74m (12'3") x 2.58m (8'6")
Shower Room	4.08m (13'5") x 1.16m (3'10")
Cellar/Bike Store	4.93m (16'2") x 3.58m (11'9")
Bin Store	1.62m (5'4") x 1.49m (4'11")