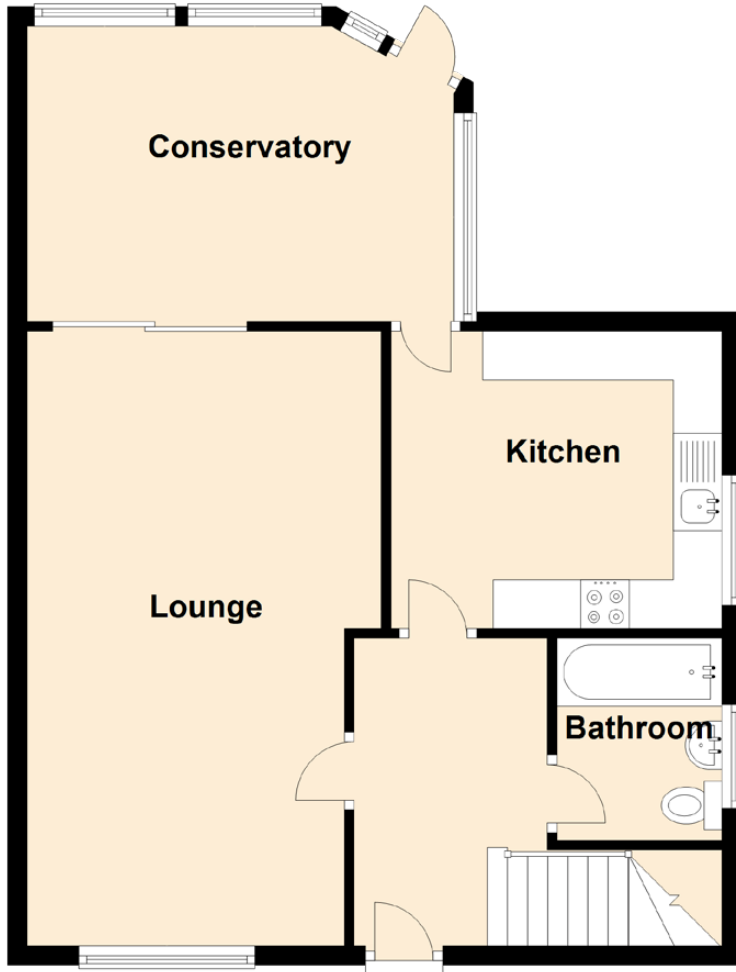


# 10 Cluny Park

## Ground Floor



Approximate Dimensions  
(Taken from the widest point)

Lounge	6.33m (20'9") x 3.65m (12')
Kitchen	3.41m (11'2") x 3.06m (10')
Conservatory	4.40m (14'5") x 3.04m (10')
Bedroom 1	3.59m (11'9") x 2.86m (9'5")
Bedroom 2	4.07m (13'4") x 2.65m (8'8")
Bedroom 3	4.24m (13'11") x 2.57m (8'5")

## First Floor

