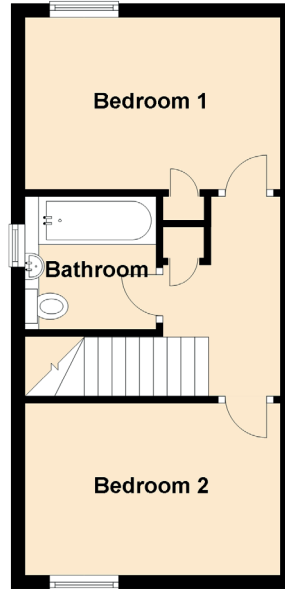
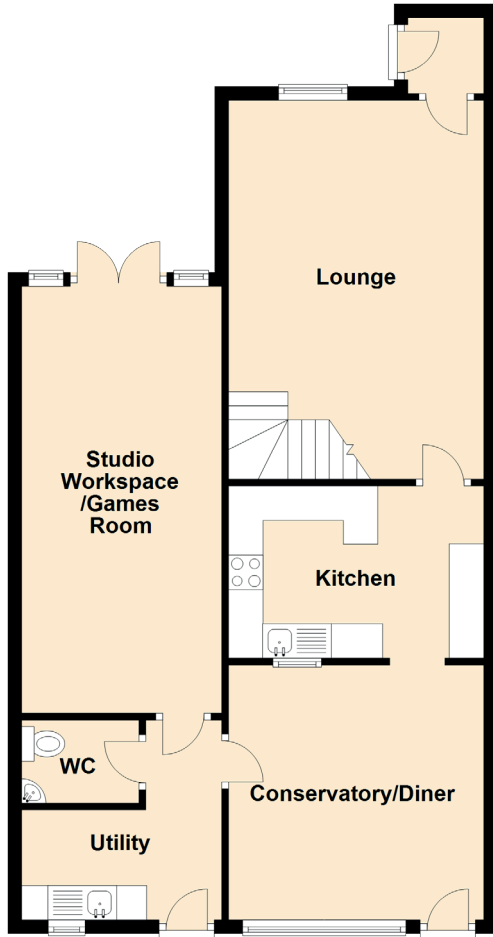


# 20 Langdykes Way

COVE BAY, ABERDEEN, AB12 3HG



Approximate Dimensions (Taken from the widest point)

Lounge	5.50m (18'1") x 3.90m (12'10")
Kitchen	3.90m (12'10") x 2.50m (8'2")
Conservatory/Diner	3.70m (12'2") x 3.70m (12'2")
Utility	2.90m (9'6") x 2.90m (9'6")
WC	1.70m (5'7") x 1.20m (3'11")
Studio Workspace/Games Room	6.20m (20'4") x 3.00m (9'10")
Bedroom 1	3.90m (12'10") x 2.50m (8'2")
Bedroom 2	3.90m (12'10") x 2.60m (8'6")
Bathroom	1.90m (6'3") x 1.90m (6'3")