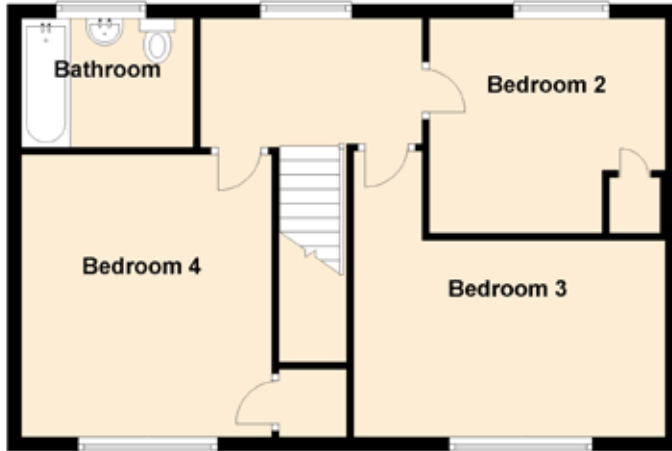


# 13 Park Road

HARTHILL, SHOTTS, LANARKSHIRE, ML7 5RB



Approximate Dimensions (Taken from the widest point)

Lounge	5.80m (19') x 3.30m (10'10")
Kitchen	5.50m (18'1") x 2.40m (7'10")
Bedroom 1	3.40m (11'2") x 3.20m (10'6")
Bedroom 3	4.30m (14'1") x 4.20m (13'9")
Bedroom 2	3.30m (10'10") x 3.00m (9'10")
Bedroom 4	4.00m (13'1") x 3.50m (11'6")
Bathroom	2.40m (7'10") x 1.80m (5'11")

