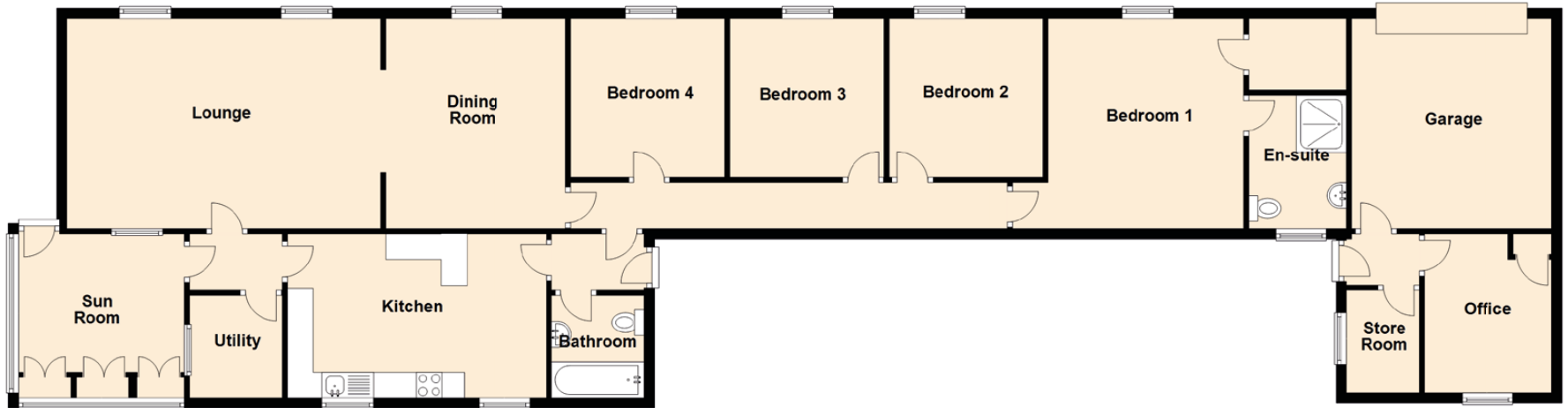


# Ythanview Cottage

AUCHTERLESS, TURRIFF, AB53 8DR



Approximate Dimensions  
(Taken from the widest point)

Lounge	6.10m (20') x 4.10m (13'5")
Kitchen	5.80m (19') x 3.10m (10'2")
Dining Room	4.10m (13'5") x 3.50m (11'6")
Sun Room	3.20m (10'6") x 3.20m (10'6")
Bedroom 1	4.10m (13'5") x 3.80m (12'6")

En-suite	2.60m (8'6") x 1.90m (6'3")
Bedroom 2	3.10m (10'2") x 3.00m (9'10")
Bedroom 3	3.10m (10'2") x 3.00m (9'10")
Bedroom 4	3.10m (10'2") x 3.00m (9'10")
Bathroom	2.00m (6'7") x 1.80m (5'11")
Office	3.10m (10'2") x 2.50m (8'2")
Utility	2.00m (6'7") x 1.80m (5'11")
Garage	4.60m (15'1") x 3.50m (11'6")