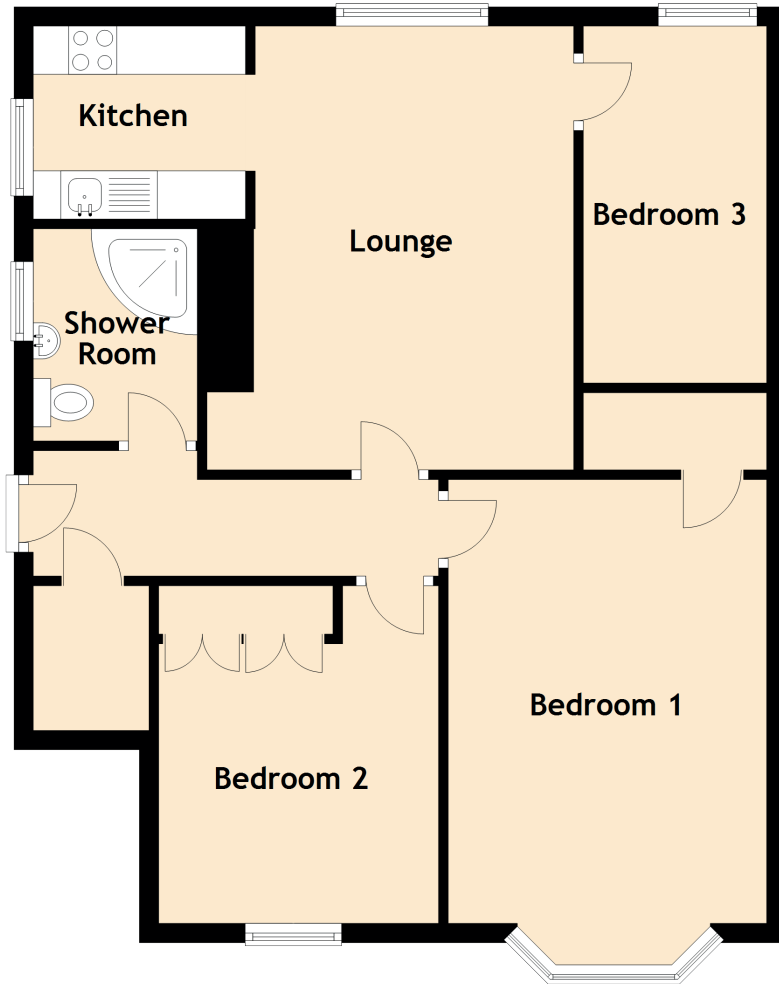


SPECIFICATIONS & DETAILS FLOOR PLAN, DIMENSIONS & MAP



Approximate Dimensions (Taken from the widest point)

| | |
|-------------|--------------------------------|
| Lounge | 4.60m (15'1") x 3.80m (12'6") |
| Kitchen | 2.20m (7'3") x 2.00m (6'7") |
| Bedroom 1 | 4.60m (15'1") x 3.30m (10'10") |
| Bedroom 2 | 3.50m (11'6") x 2.90m (9'6") |
| Bedroom 3 | 3.70m (12'2") x 1.90m (6'3") |
| Shower Room | 2.20m (7'3") x 1.70m (5'7") |

Gross internal floor area (m²): 71m² | EPC Rating: C

Extras (Included in the sale): White goods may be available through separate negotiation.

